

# DESIGN SCHEDULE

## March 19, 2026 Community Meeting 2

CBA presents schematic design options for community feedback. Collect public input regarding schematic designs and preferred design elements to be included in the final design.

## May 12, 2026 Community Meeting 3

CBA gathers public responses and feedback to proposed master plan.

## Late Summer 2026 - Spring 2027

The City will seek grants and other funding to finish design and build the project.

## January 22, 2026 Community Meeting 1

Present site analysis, tentative project schedule, possible precedents, and potential design ideas. Collect public input regarding desired features, concerns, and other issues.

## Funding Awarded?

CBA will complete the construction drawings and the City will put the project out to bid; stay tuned for future updates!

## February 2026 Community Survey 1

Gather initial public input on desired program elements and current use through an online survey.

## Late March-April Community Survey 2

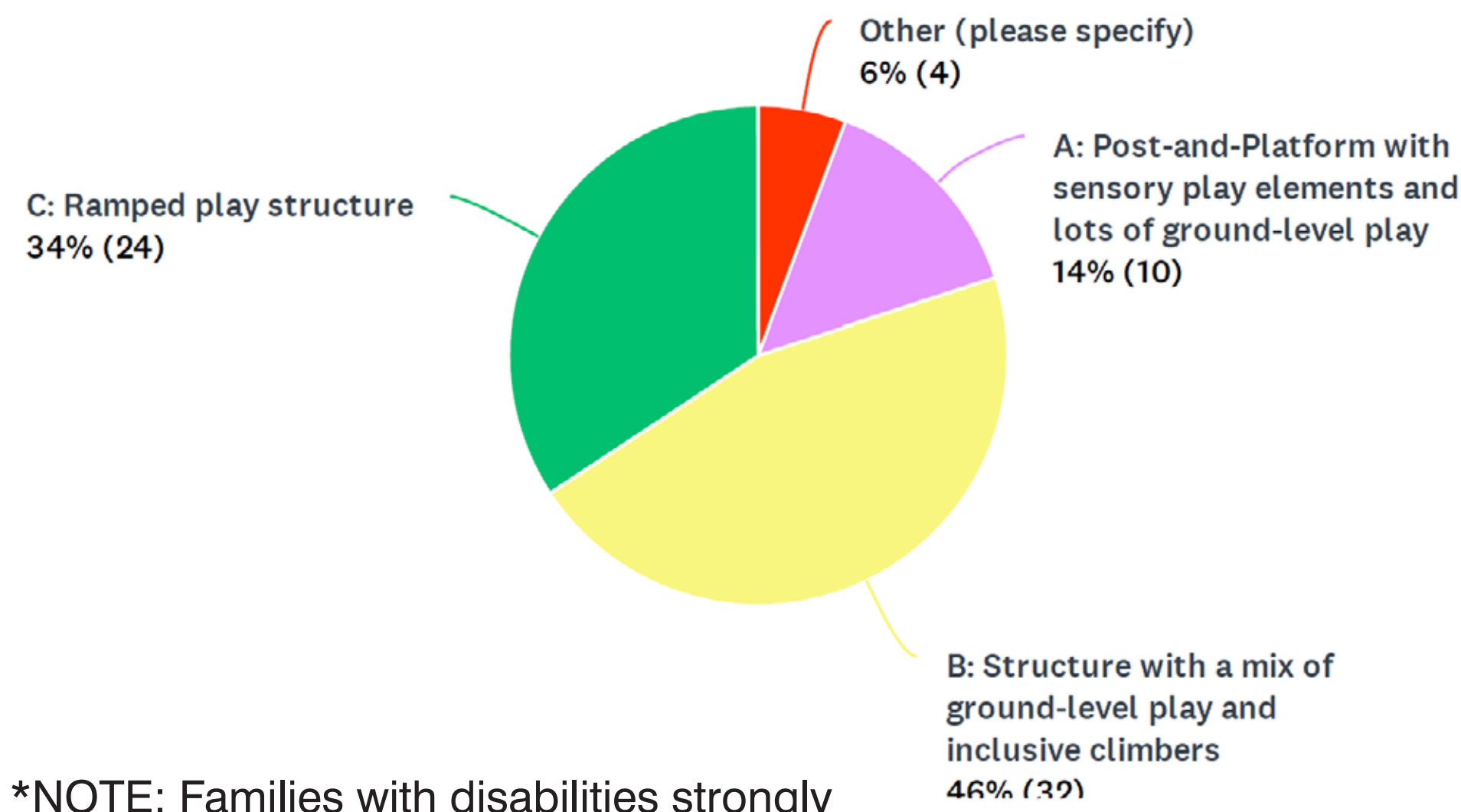
Gather additional public responses to the Schematic Design options to inform the final Proposed plan.

## Summer 2026 Definitive Design

CBA will refine the the proposed plan and play equipment selection to resolve questions and provide a detailed cost estimate.

# SURVEY FEEDBACK

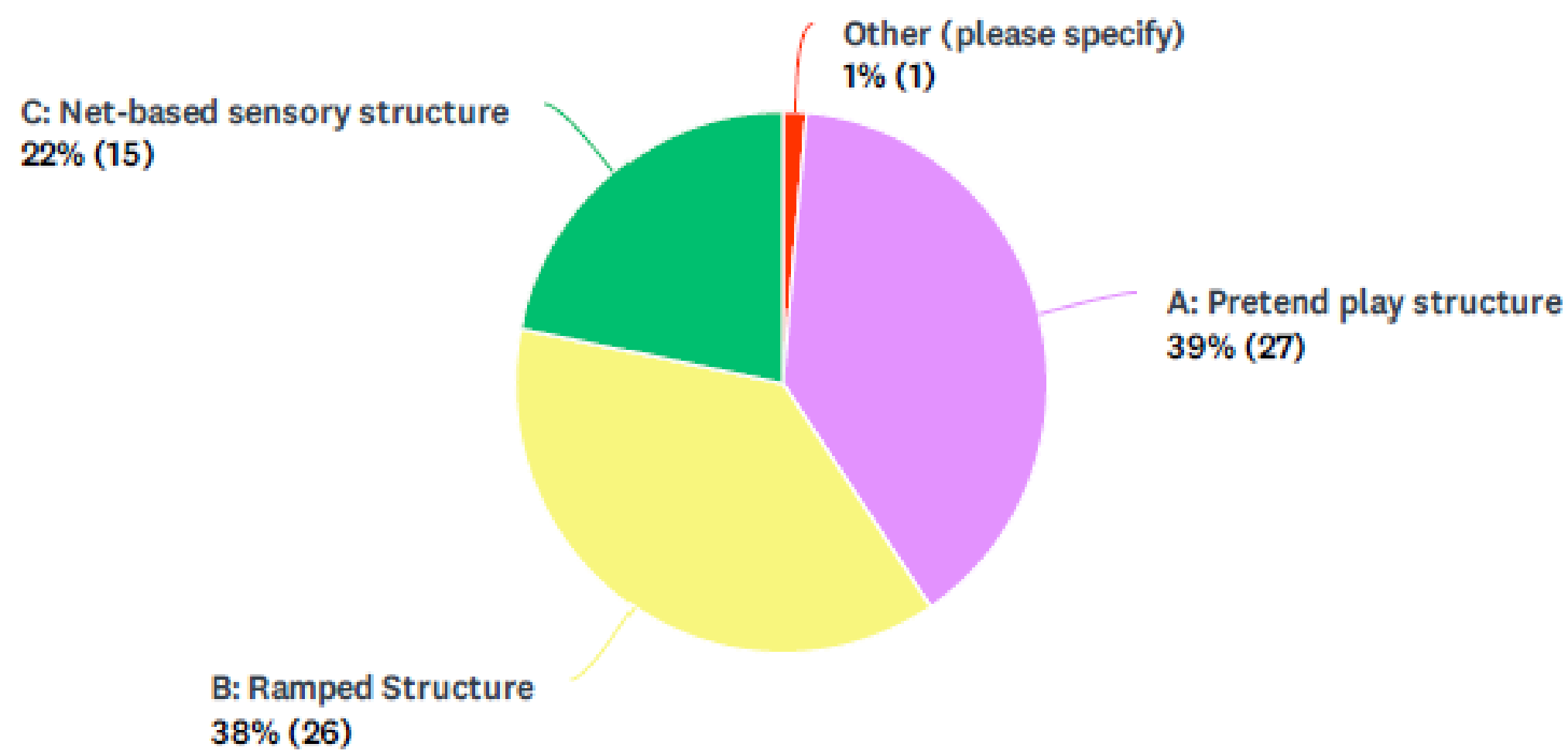
Which style of larger grade school play structure do you prefer?



\*NOTE: Families with disabilities strongly preferred (60%) a ramped play structure.

**"I like the playhouse, rolling hills, bridge, and sandbox."**

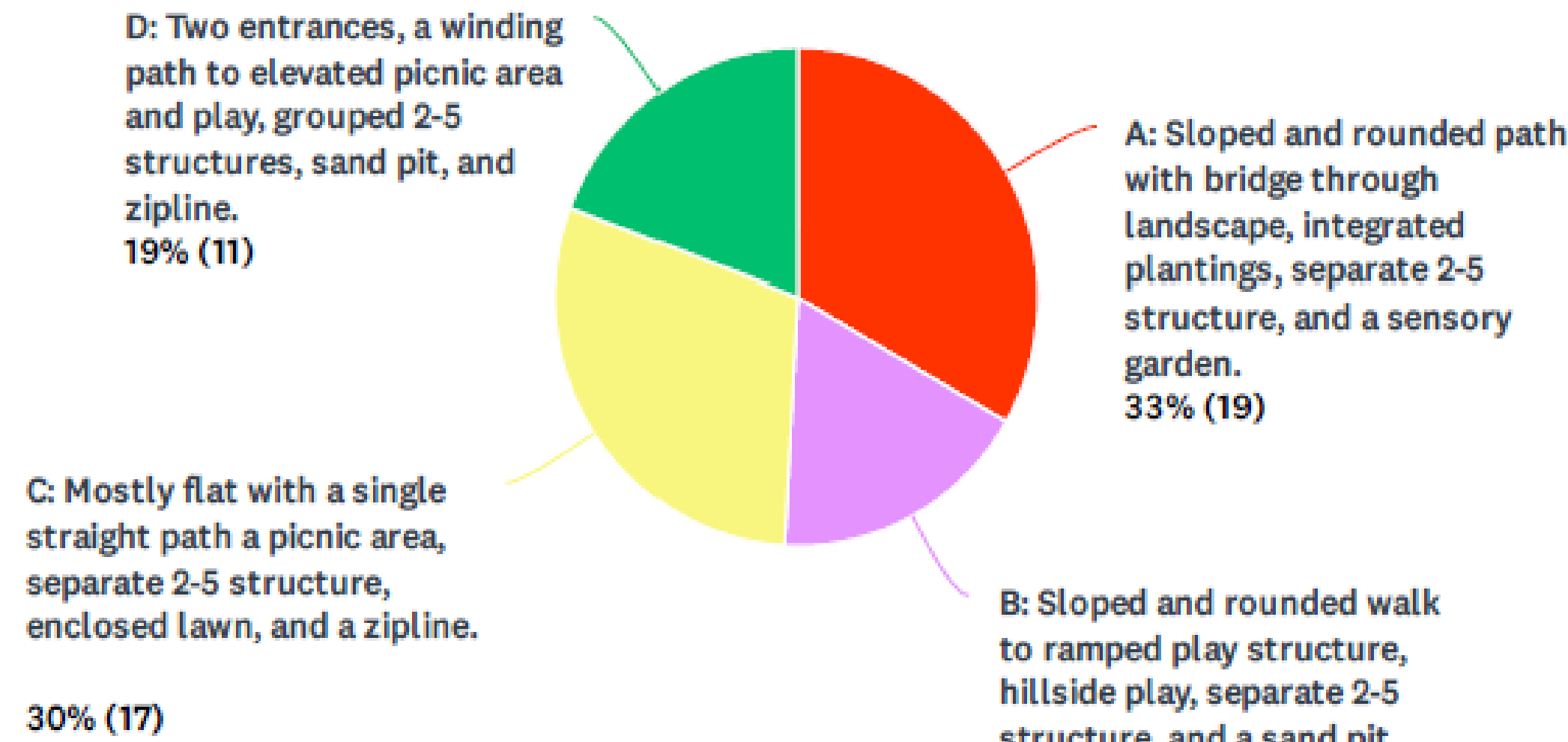
Which style of smaller pre-school play structure do you prefer?



**"A zipline would be amazing!"**

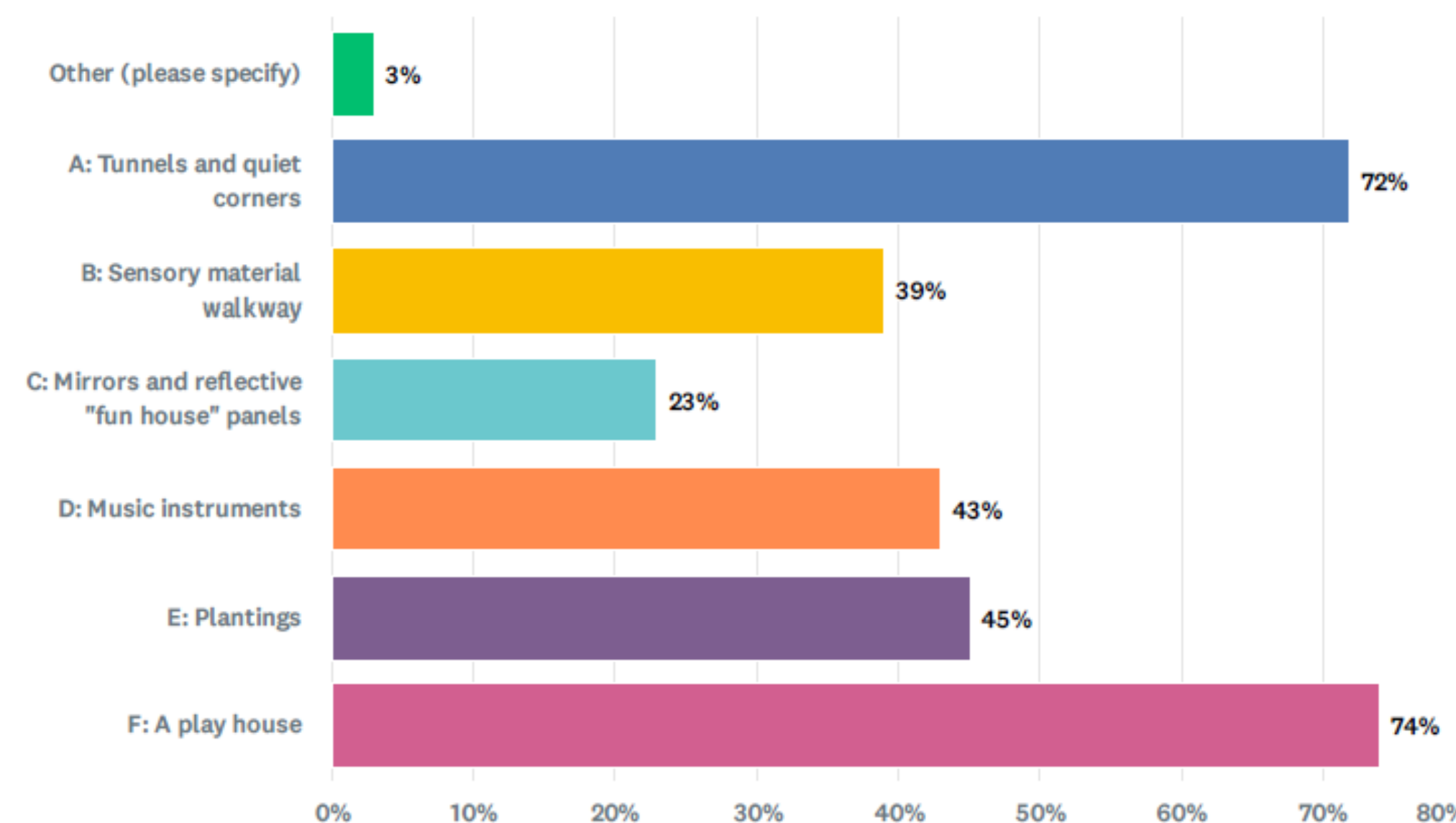
**"My kids like running up and down hills - the bigger the better."**

Which of the plans shown do you prefer overall?

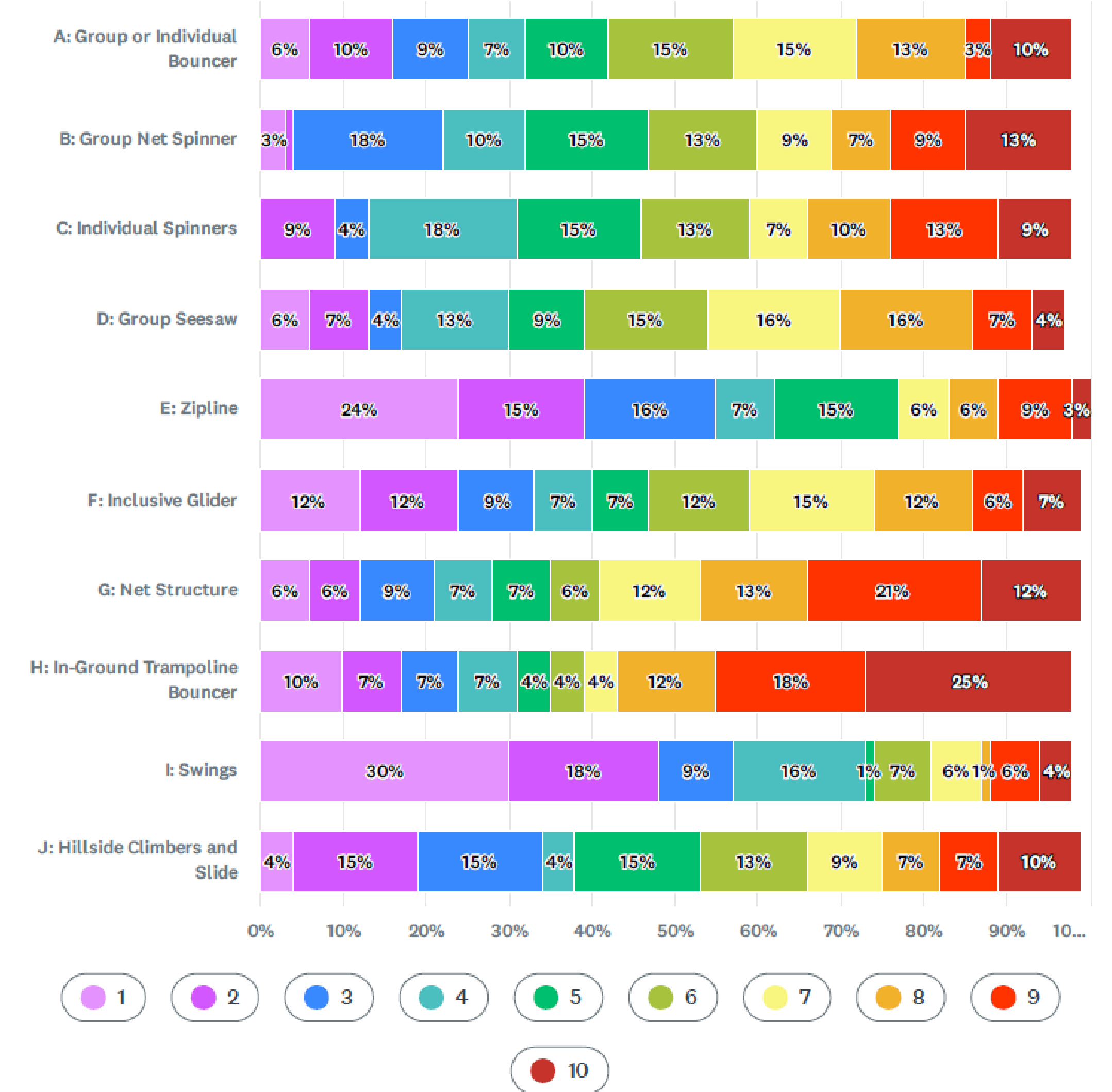


**"I'm a big fan of the sensory garden."**

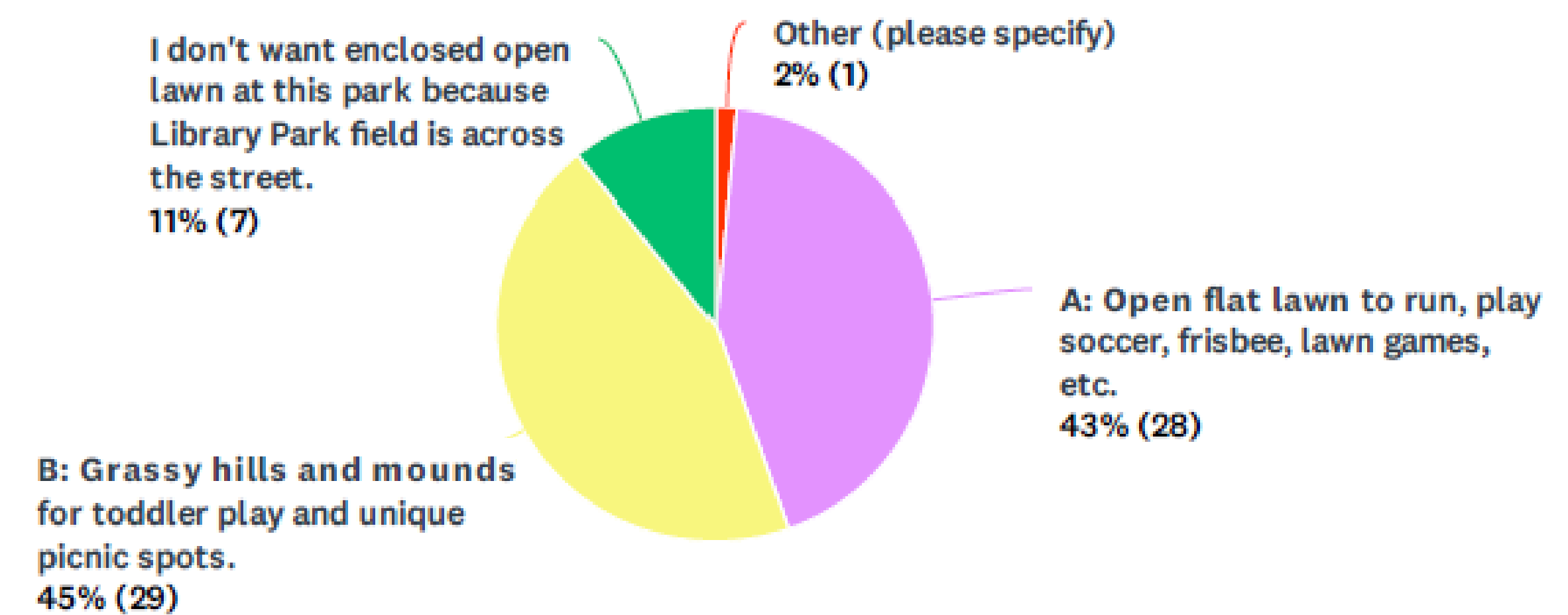
We are intending to include a quiet refuge space that allows for self-regulation. What kinds of features would you like in a refuge space? (Select all that apply.)



Please rank the play components show above in your preferred order of priority (1=prefer most, 10=prefer least). Note: The images represent general feature types, not specific product selections.

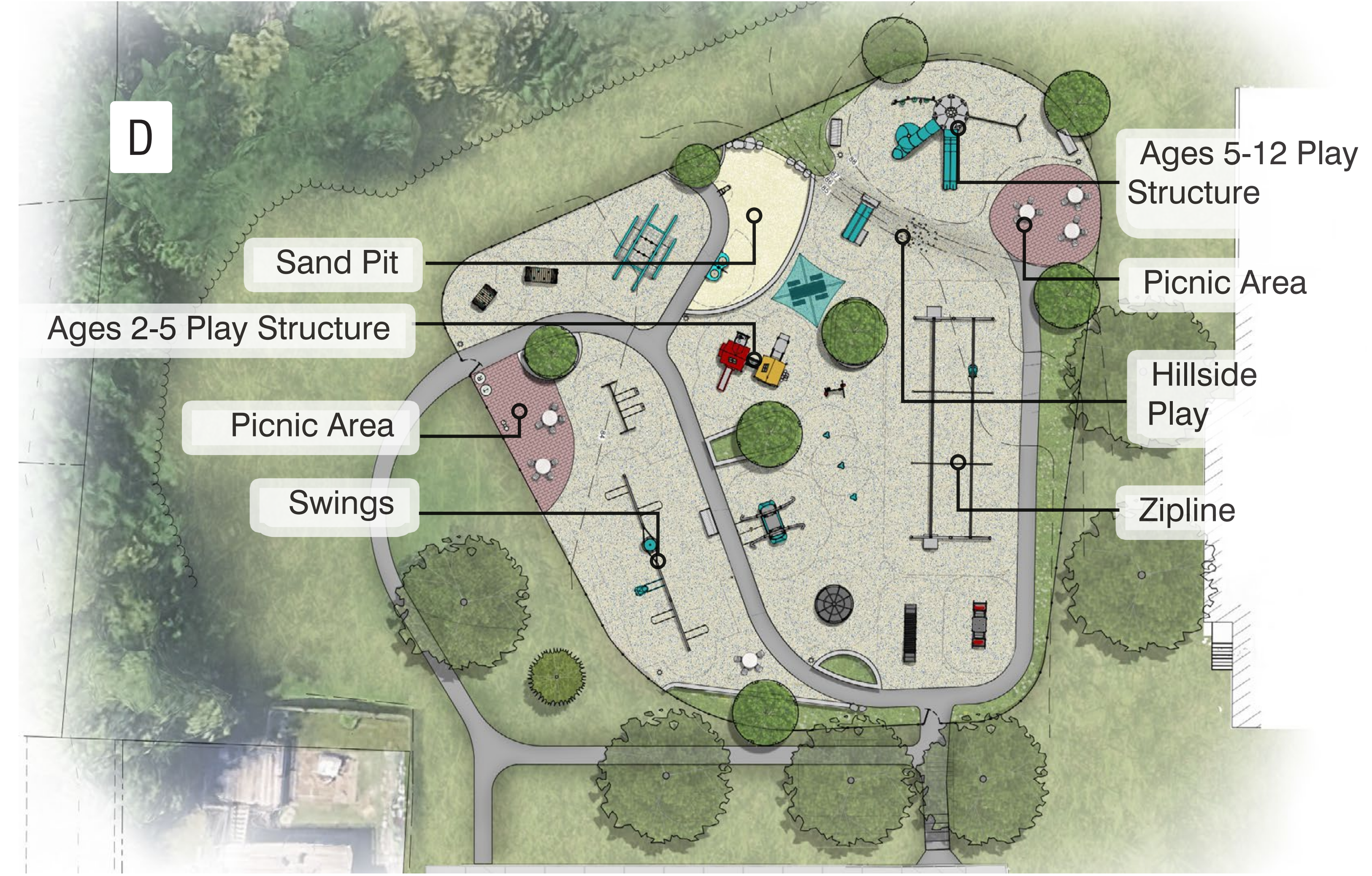
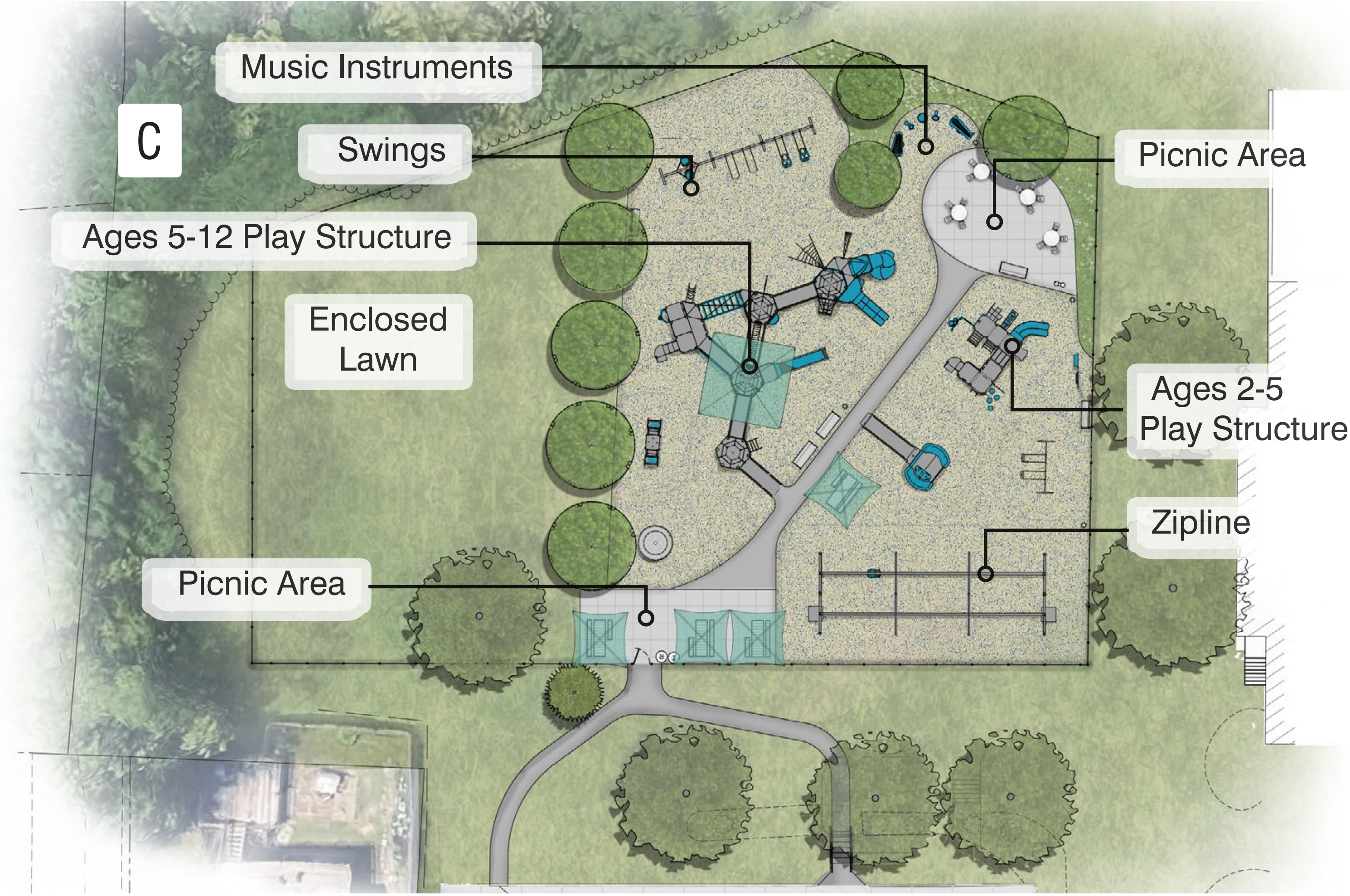
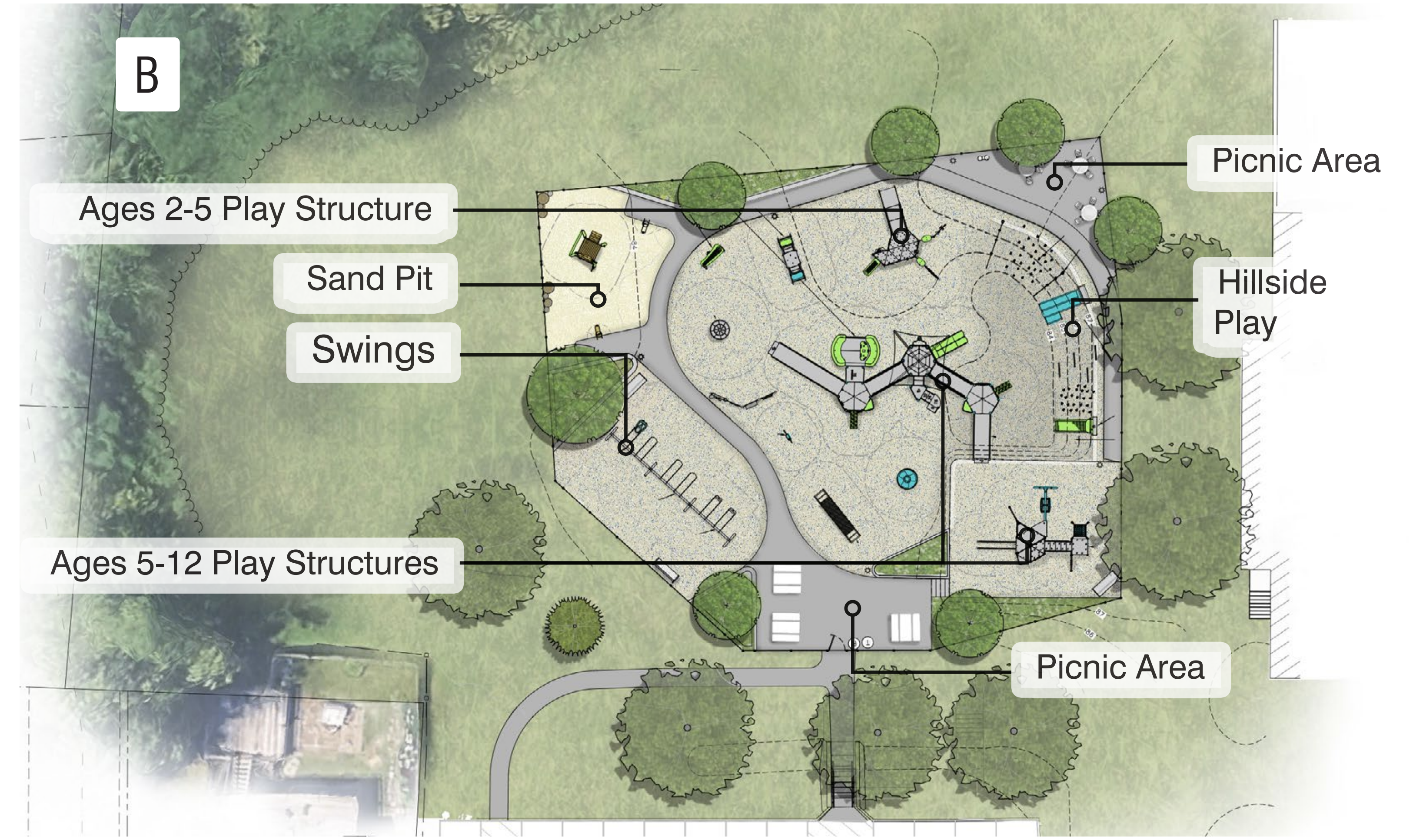
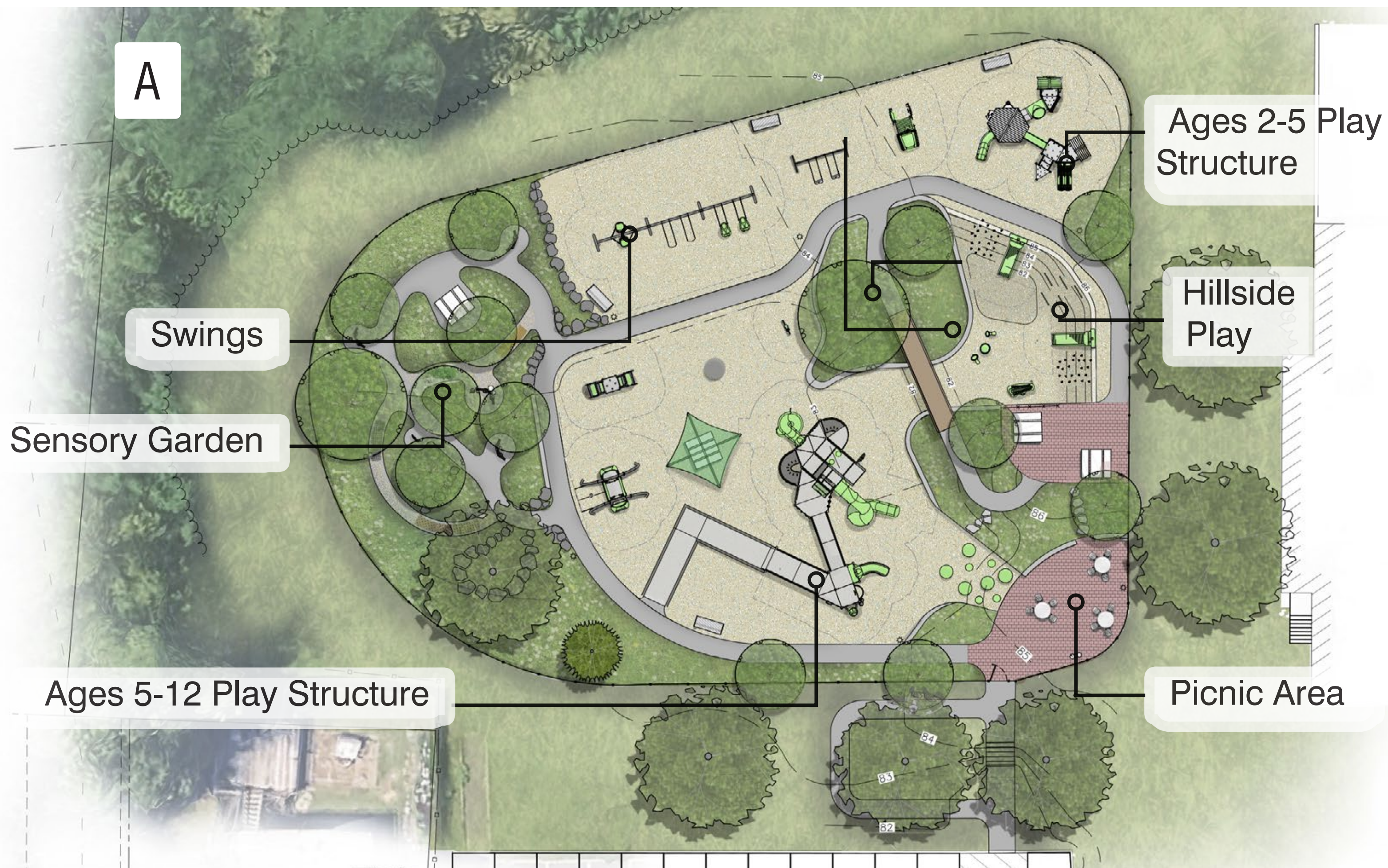


How would you like to see enclosed lawn used?



**"We love the hillside play and sensory garden!"**

# SCHEMATIC DESIGNS



# PROPOSED MASTER PLAN

## LEGEND

- A** New Striped Accessible Parking Spaces and Crosswalk
- B** Bike Racks and Sidewalk at Parking
- C** Accessible Sloped Walk
- D** Double-Gated Entrance (Playground is fully fenced)
- E** Protect Existing Trees (7)
- F** New Shade and Ornamental Trees (+/- 30)
- G** Secondary Exit
- H** Enclosed Lawn
- I** Picnic Area
- J** Ramped & Bridged Ages 5-12 Play Structure
- K** Inclusive Swings - Belt, Molded, & Friendship
- L** Inclusive Zipline
- M** Inclusive Glider Swing
- N** Inclusive Multi-Person Seesaw
- O** In-Ground Inclusive Spinner
- P** Inclusive Sensory Net Tunnel
- Q** Individual Spinners
- R** Rubber Hillside with Embankment Slides and Climbers
- S** Sloped Connecting Path
- T** Ages 2-5 Play Area (Pretend and Inclusive Play)
- U** Bucket and Adaptive Seat Toddler Swings
- V** Sensory Garden
- W** Accessible Sand Pit
- X** Play House
- Y** Log Tunnel and Stepping Logs
- Z** Nature-Themed Musical Instruments



# REFERENCE IMAGES



J 5-12 Play Structure with Bridges and Ramps (Example)



T 2-5 Play Structure (Example)



T Toddler Play House



T Preschool Play Panels



P Inclusive Sensory Net Tunnel



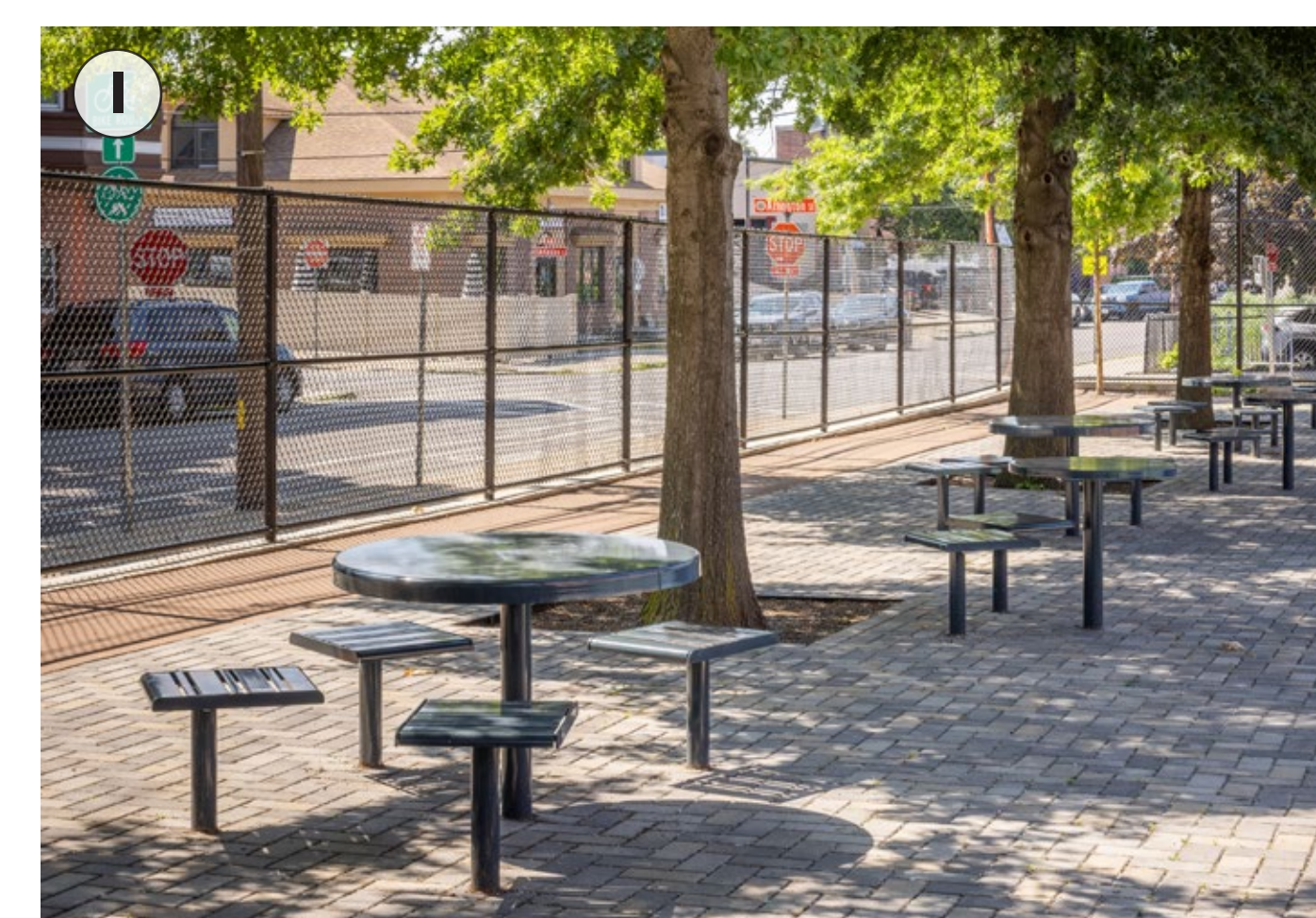
W Inclusive Sand Table



W Accessible Sand Play Platform



W Inclusive Diggers



I Picnic Area



K Friendship Swing



L Inclusive Zipline



Y Log Tunnel



O Inclusive Group Spinner



N Multi-Person Inclusive Seesaw



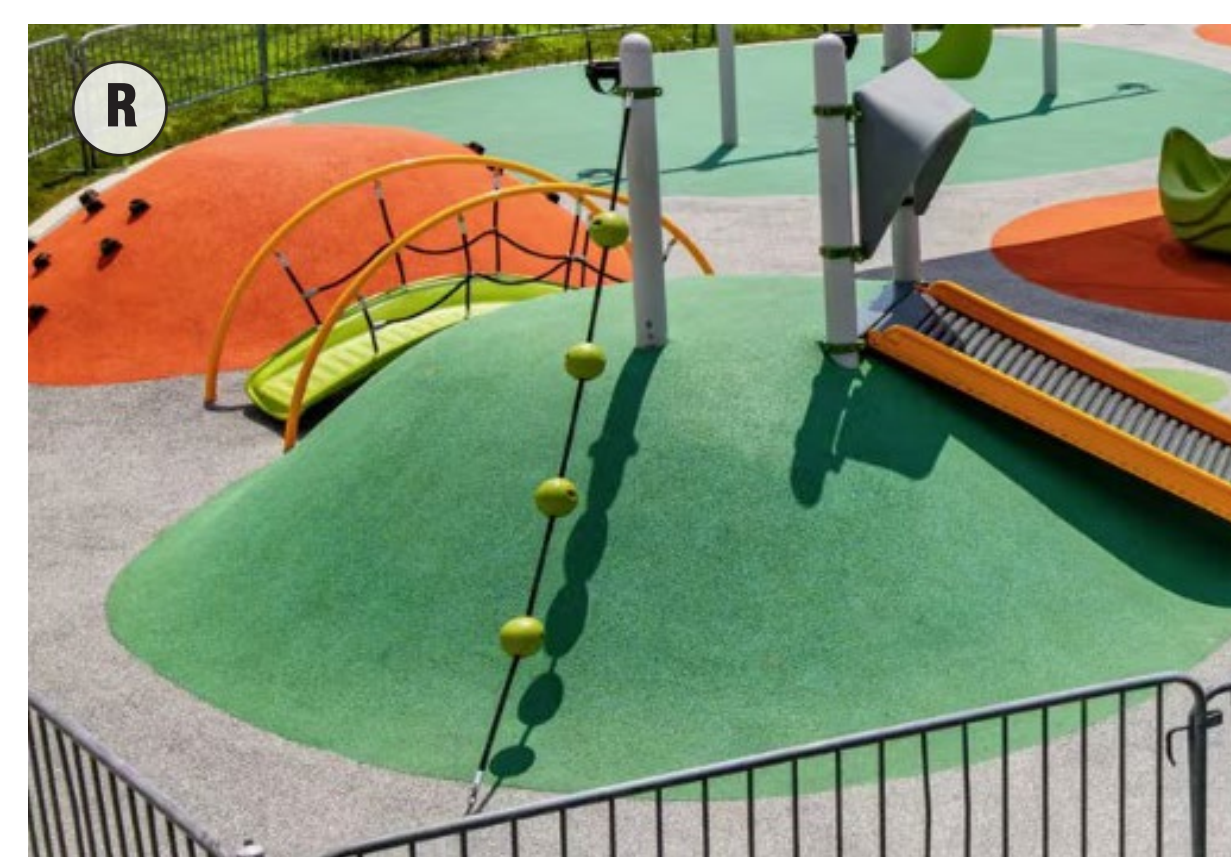
M Inclusive Glider Swing



K T Adaptive Swings



R Embankment Slides



R Hillside Rope Ladder



R Hillside Climbers



Q Individual Spinners



Z Nature-Themed Musical Instruments