



Community Meeting #2

Library Park Renovation

Woburn, MA

AGENDA

- Introduction
- Project Overview
- Meeting 1 Summary
- Schematic Design Options
- Discussion

March 18, 2026

City of Woburn

Mayor Michael Concannon

City of Woburn Recreation Department

Rory Lindstrom, Recreation Director

CBA Landscape Architects LLC

D.J. Chagnon, Principal-in-Charge
Serena DeNicola, Landscape Designer

Playful Pelican

Chenine Peloquin

In Cooperation With

The Commission on Disability

Woburn Public Schools

Woburn Recreation Commission

and

The Special Education Parent Advisory Council (SEPAC)

Online Survey 1 (December 8 - January 11): Short questionnaire was distributed to gauge community preferences and ideas and to shape initial designs.

Community Meeting 1 (January 22): Introduced the project and team, discussed inclusive play, reviewed survey 1, and presented and discussed site element possibilities.

Schematic Design (February): CBA developed several design concepts for the space based on the input so far.

Community Meeting 2 (March): Present the schematic design concepts for community review and discussion, with the goal of developing a final preferred design.

Online Survey 2 (Late March): Collect reactions and feedback on the initial design concepts to fit the final design to the community's needs.

Community Meeting 3 (April): Present Definitive Design for playground construction, including features and play equipment based on community discussion and survey 2.

Construction Documents (Spring): CBA will finalize Definitive Design into detailed Construction Documents suitable for bidding purposes.

Construction Start: Schedule to be determined by funding availability.

An aerial photograph of a park area. In the center, there is a large, circular, light-colored area with some structures or equipment. To the right, there is a large, multi-story building with a flat roof. Below the building, there is a parking lot with several cars. The area is surrounded by green trees and grass. The text "PROJECT OVERVIEW" is overlaid in the center in white, bold, sans-serif font.

PROJECT OVERVIEW



As Woburn's second inclusive playground, it will be designed to be safe, durable, low-maintenance, and responsive to the needs of the community.

- Work with local families, neighbors, and city departments to ensure the design reflects **community** needs.
- Incorporate **universally inclusive design** principles to support creativity, interaction, and multiple forms of play for children of all abilities; and complying with ADA standards to improve access and connectivity for persons with disabilities.
- Ensure there are **shaded, comfortable** areas for children and caregivers.
- **Renovate** the aging play space at Library Park.
- Capitalize on Library Park's **central location** and the connection to the ball fields to create a community destination
- Take advantage of the site's **size**, the existing parking, the **mature trees**, and the surrounding woods.

Inclusive play ensures that all children regardless of ability can learn, grow, and belong. It goes beyond accessibility by breaking down both physical and social barriers, and creating spaces for connection, creativity, and joy. The design supports the whole child and the whole community.

7 Principles of Inclusive Playground Design®

Inclusive

Recognizes everyone's right to fully participate and contribute to meaningful play experiences.
- Various Sources

Accessible

The needs of people with disabilities are considered. A site, building, facility or part thereof that complies with the standard.
- Americans with Disabilities Act, 1990

A design process in which the needs of people with disabilities are considered. Accessible is defined as a site, building, facility or part thereof that complies with the standard.
- PlayCore and Utah State University, 2008

Universal

The design of products and environments are usable by all people, to the greatest extent possible, without the need for adaptation or specialized design.
- Ron Mace, 1988



GOES BEYOND PHYSICAL ACCESS
Designs for all abilities and ages and promotes social justice, confidence, and community connection

**graphics from "7 Principles of Inclusive Design" by Playcore*

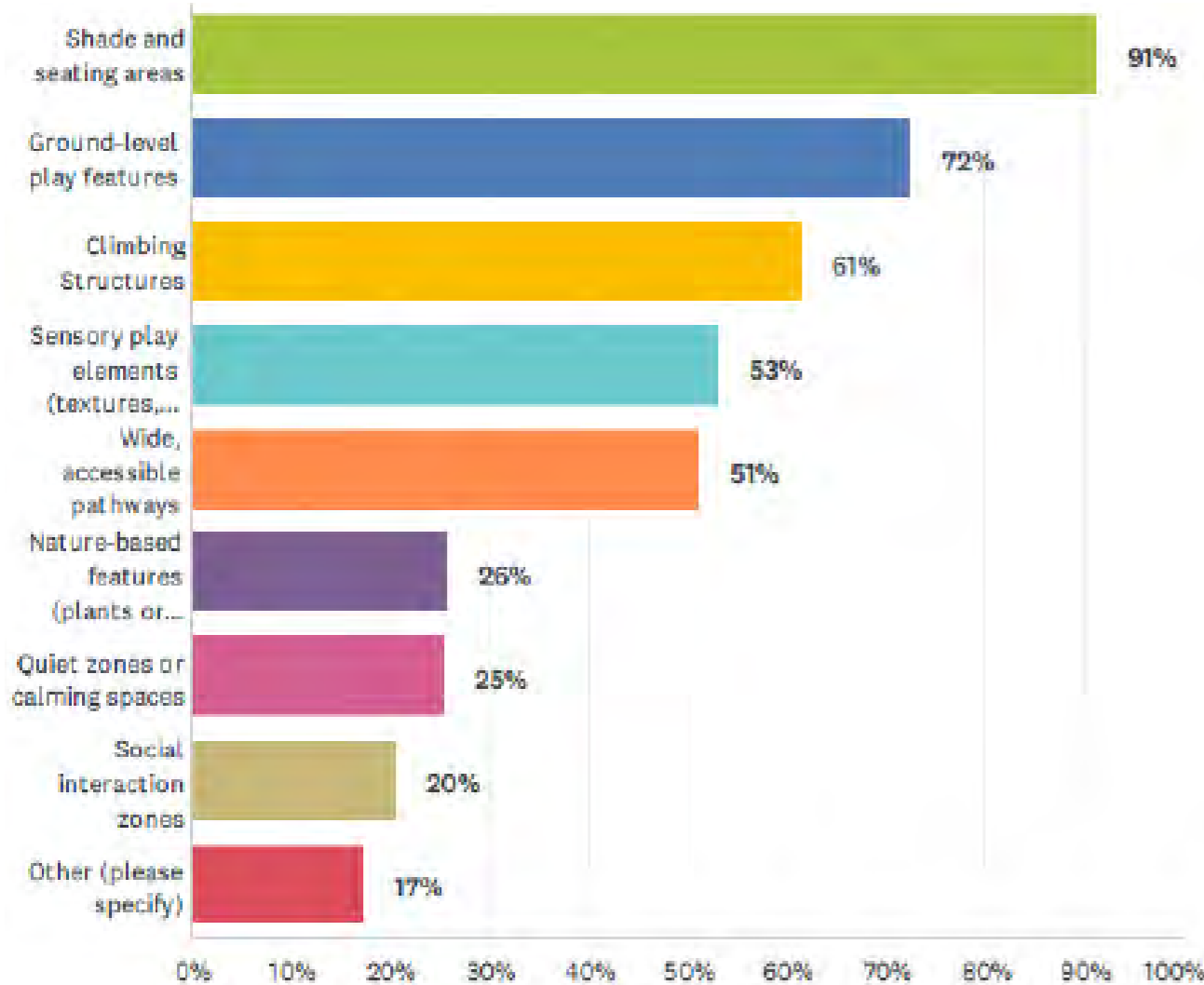
An aerial photograph of a park area. The image shows a large green lawn, a playground with a sand area and blue equipment, a paved parking lot with several cars, and a large, light-colored building with a flat roof. The text "MEETING 1 SUMMARY" is overlaid in the center in a bold, white, sans-serif font.

MEETING 1 SUMMARY

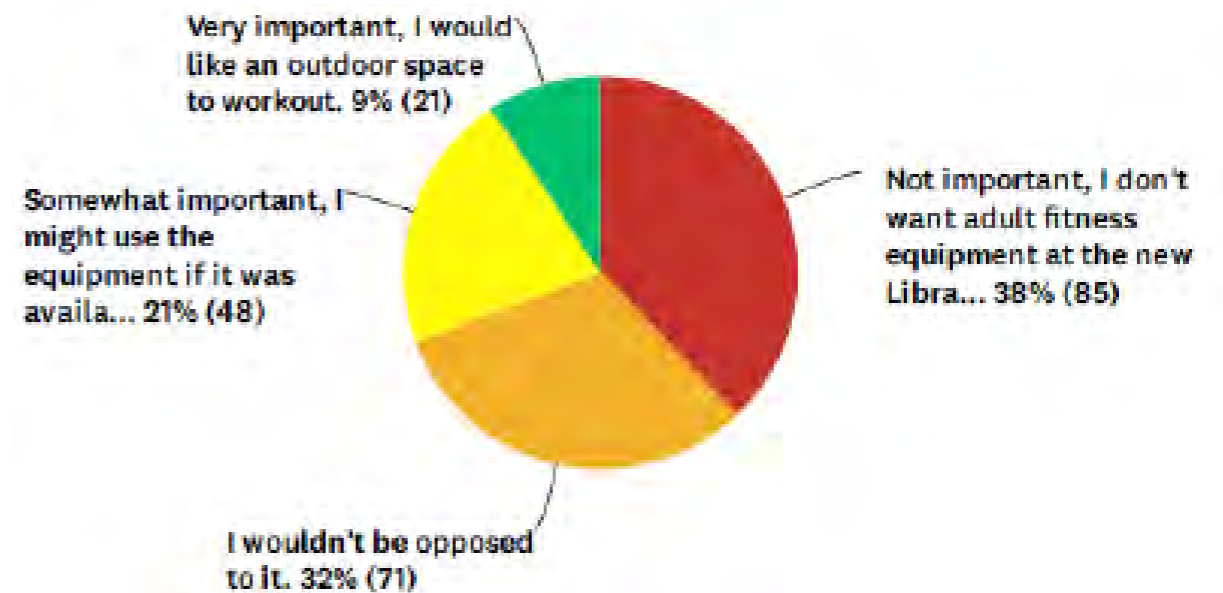
SURVEY 1 RESULTS

The initial **public survey** received 283 responses and generated great feedback about what residents value in terms of inclusive play and other aspects of the design.

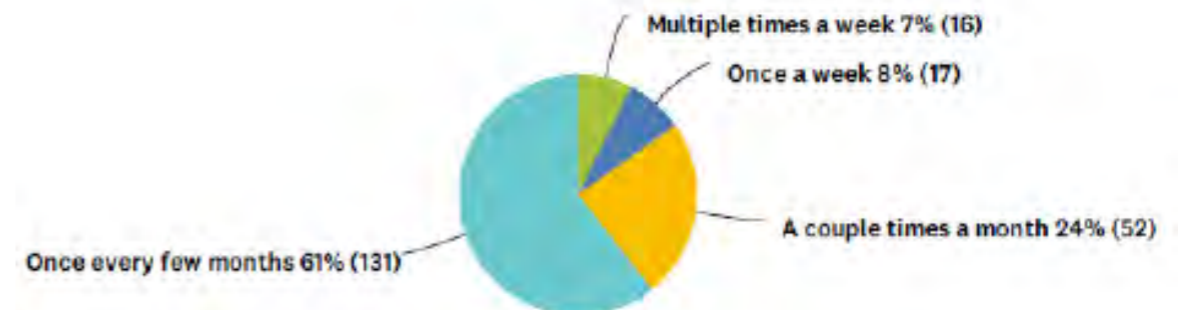
Which features do you believe are most important in an inclusive playground? (Select your top 5 choices)



How important is it to you to include adult fitness equipment as part of the new playground?



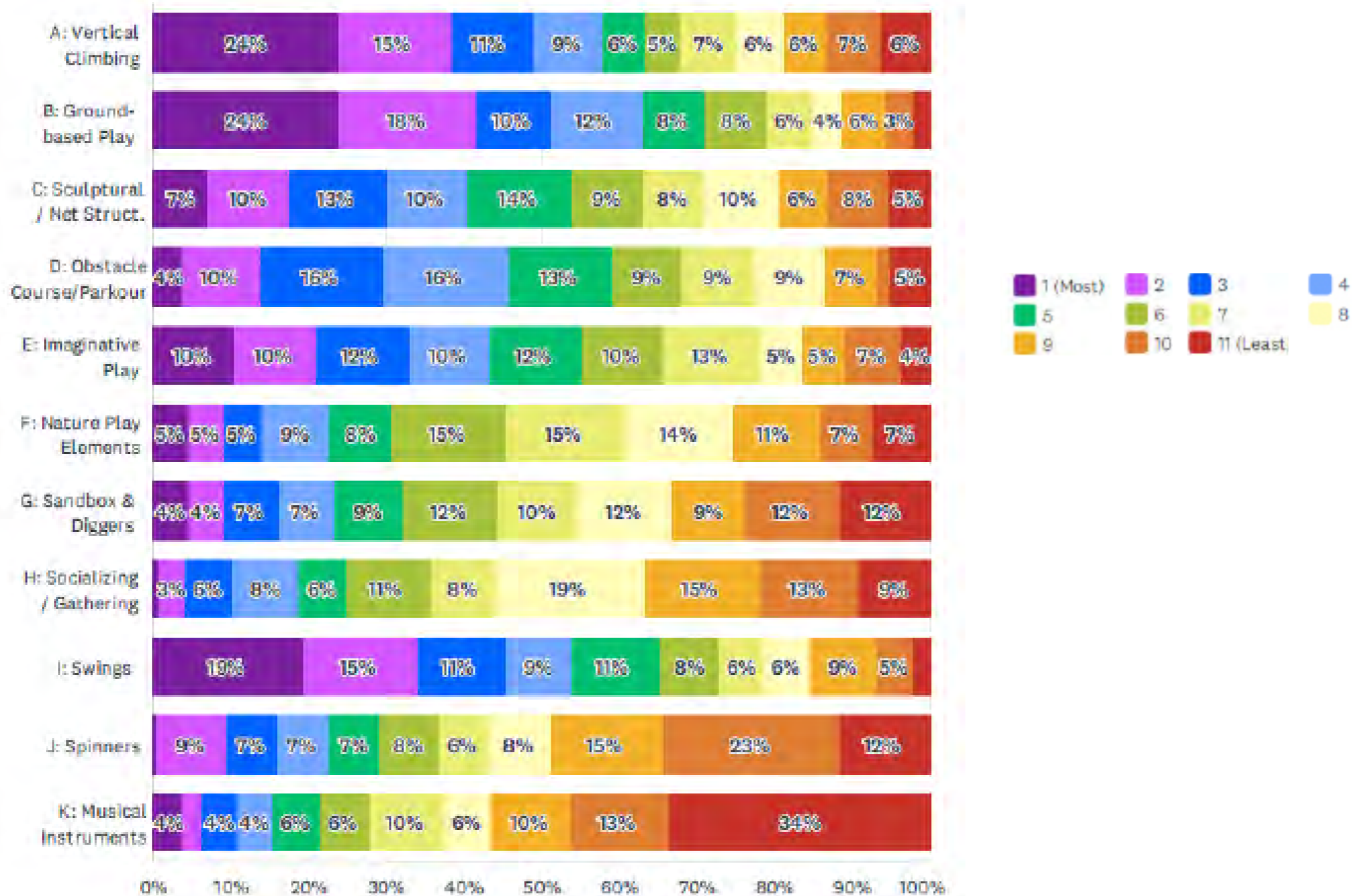
How often do you currently visit Library Park?



SURVEY 1 RESULTS

MEETING 1 SUMMARY

Please rank the concepts shown above in your preferred order of priority (1 = prefer most, 11 = prefer least). Please note that images illustrate possibilities, not the final design or style.



PROGRAMMING TO INCLUDE

MEETING 1 SUMMARY



Benches



Accessible Parking



Accessible Paths



Poured-In-Place Rubber



Full Enclosure Fencing



Integrated Plantings

PLAY EQUIPMENT STYLES

MEETING 1 SUMMARY



*Mixed Play
Gramstorff Park - Everett*



*Individual Play
Roberts Playground - Dorchester*



*Post-and-Platform Play
Choate Park - Medway*



*Net Play
Morris Playground / Keverian School - Everett*

GATHERING SPACE

MEETING 1 SUMMARY



*Curved Seat Wall and Landscaping
Harvard Kent Schoolyard - Charlestown*



*Moveable Site Furniture
Kenney Park - Somerville*



*Seat Walls
Alma Del Mar School - New Bedford*



*Pavillion and Accessible Tables
Gramstorff Park - Everett*



*Tables and Chairs
Monsignor Reynolds Playground - South End*



*Picnic Tables
Box District Park - Chelsea*

ADDITIONAL ELEMENTS

MEETING 1 SUMMARY



Water Fountain / Bottle Filler
Paris Street Playground - East Boston



Fencing and Shade Structures
Gramstorff Park - Everett



Contemporary Lighting
Deanna Cremin Playground - Somerville



*Sensory Play Wall
(Image from Landscape Structures)



Adult Fitness Equipment
John Ruiz Park, Chelsea



Musical Instruments
Morris Playground / Keverian School - Everett
*(not a CBA project)

An aerial photograph of a park area. The image shows a large green lawn with several trees, a paved parking lot with several cars, and a large, light-colored building with a flat roof. The text "SCHEMATIC DESIGNS" is overlaid in the center of the image.

SCHEMATIC DESIGNS

SCHEMATIC DESIGN A



Concept Notes:

- 17,520 SF
- Single Entrance
- Sensory Garden area
- Hillside Play features & Accessible Bridge
- Separate 2-5 and 5-12 Play Areas

PLAY EQUIPMENT

SCHEMATIC DESIGN A



Ages 5-12 Ramped Play Structure



Ages 2-5 Play Structure



Music Instruments



Hillside Climbers



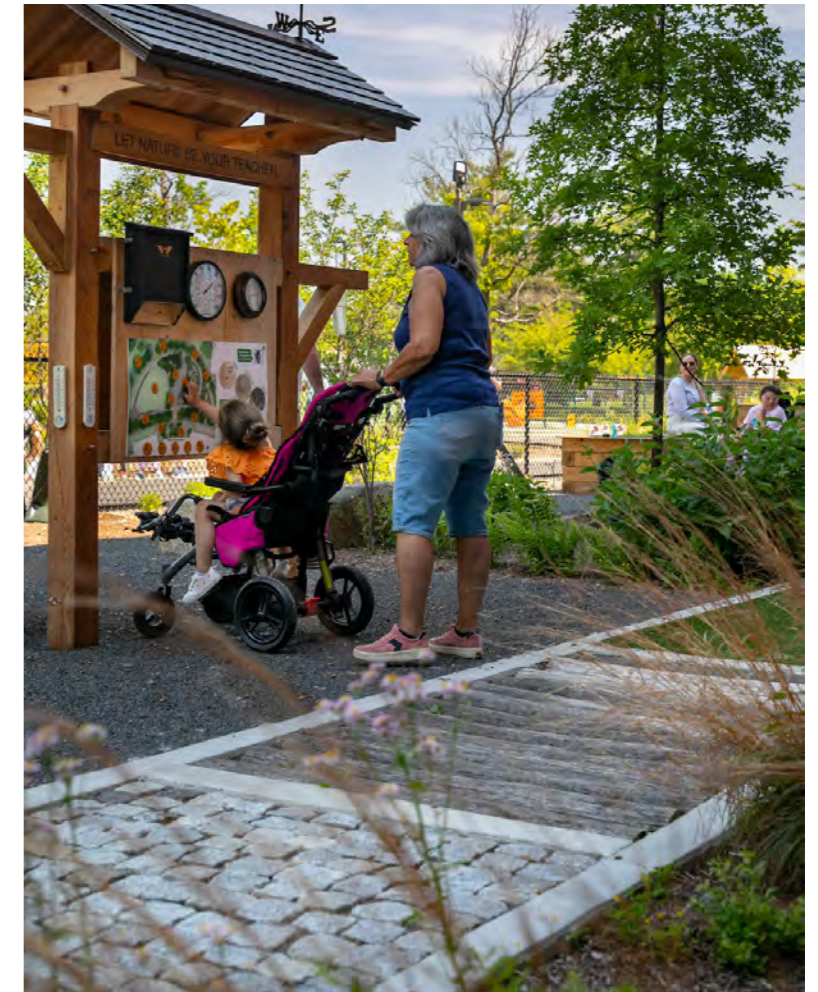
Hillside Slide

PLAY EQUIPMENT & SITE ELEMENTS

SCHEMATIC DESIGN A



Sensory Garden



Mixed Material Sensory Walk

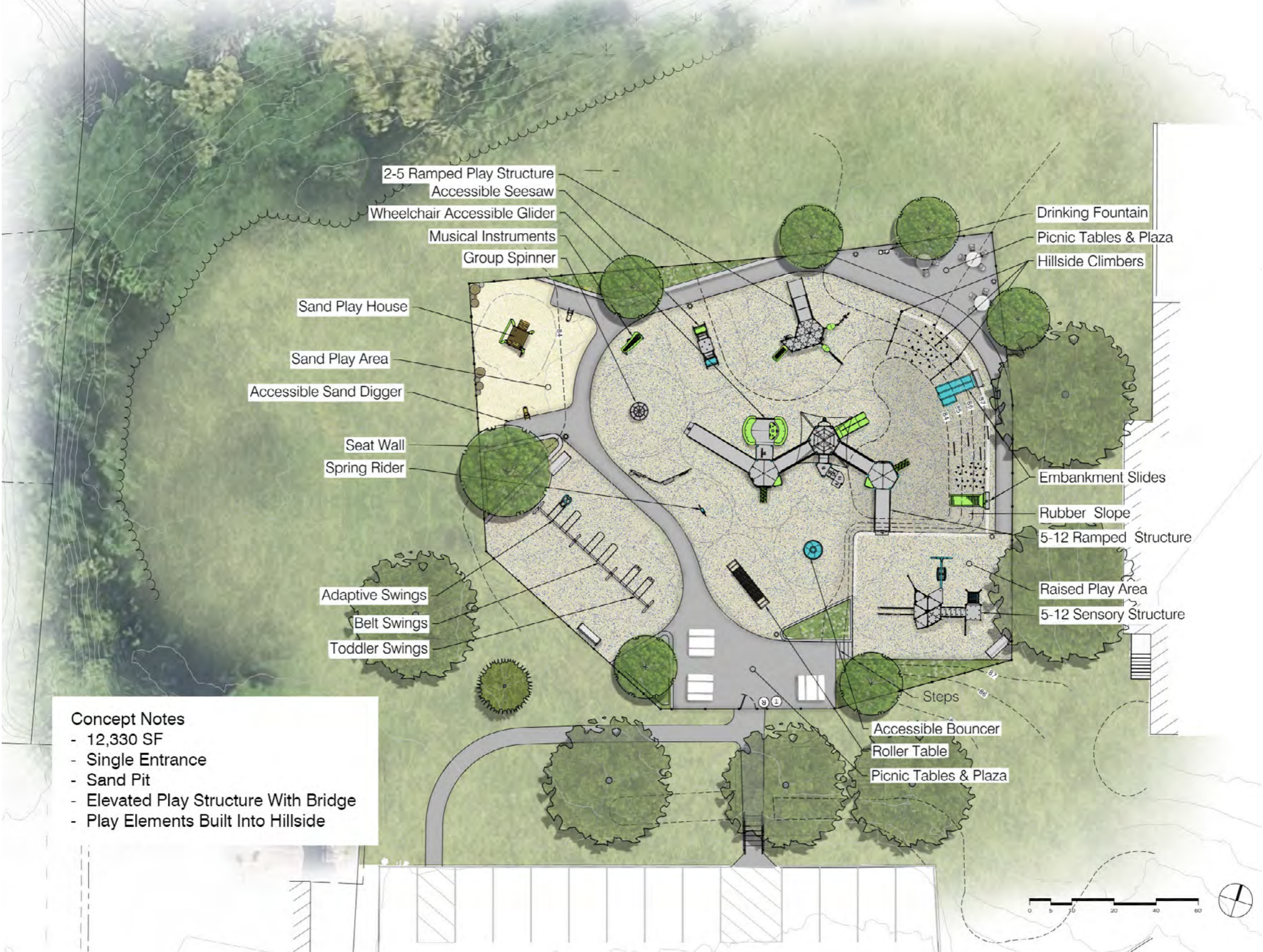


Accessible Four-Person Seesaw



Bridge

SCHEMATIC DESIGN B



2-5 Ramped Play Structure
 Accessible Seesaw
 Wheelchair Accessible Glider
 Musical Instruments
 Group Spinner

Drinking Fountain
 Picnic Tables & Plaza
 Hillside Climbers

Sand Play House
 Sand Play Area
 Accessible Sand Digger

Embankment Slides
 Rubber Slope
 5-12 Ramped Structure

Seat Wall
 Spring Rider

Raised Play Area
 5-12 Sensory Structure

Adaptive Swings
 Belt Swings
 Toddler Swings

Steps
 Accessible Bouncer
 Roller Table
 Picnic Tables & Plaza

Concept Notes
 - 12,330 SF
 - Single Entrance
 - Sand Pit
 - Elevated Play Structure With Bridge
 - Play Elements Built Into Hillside



PLAY EQUIPMENT

SCHEMATIC DESIGN B



Ages 5-12 Sensory Play Structure



Ages 2-5 Ramped Structure



Accessible Glider



Ages 5-12 Bridged Structure with Sand Pit



Hillside Rope Climber

PLAY EQUIPMENT

SCHEMATIC DESIGN B



Sand Play



Group Bouncer

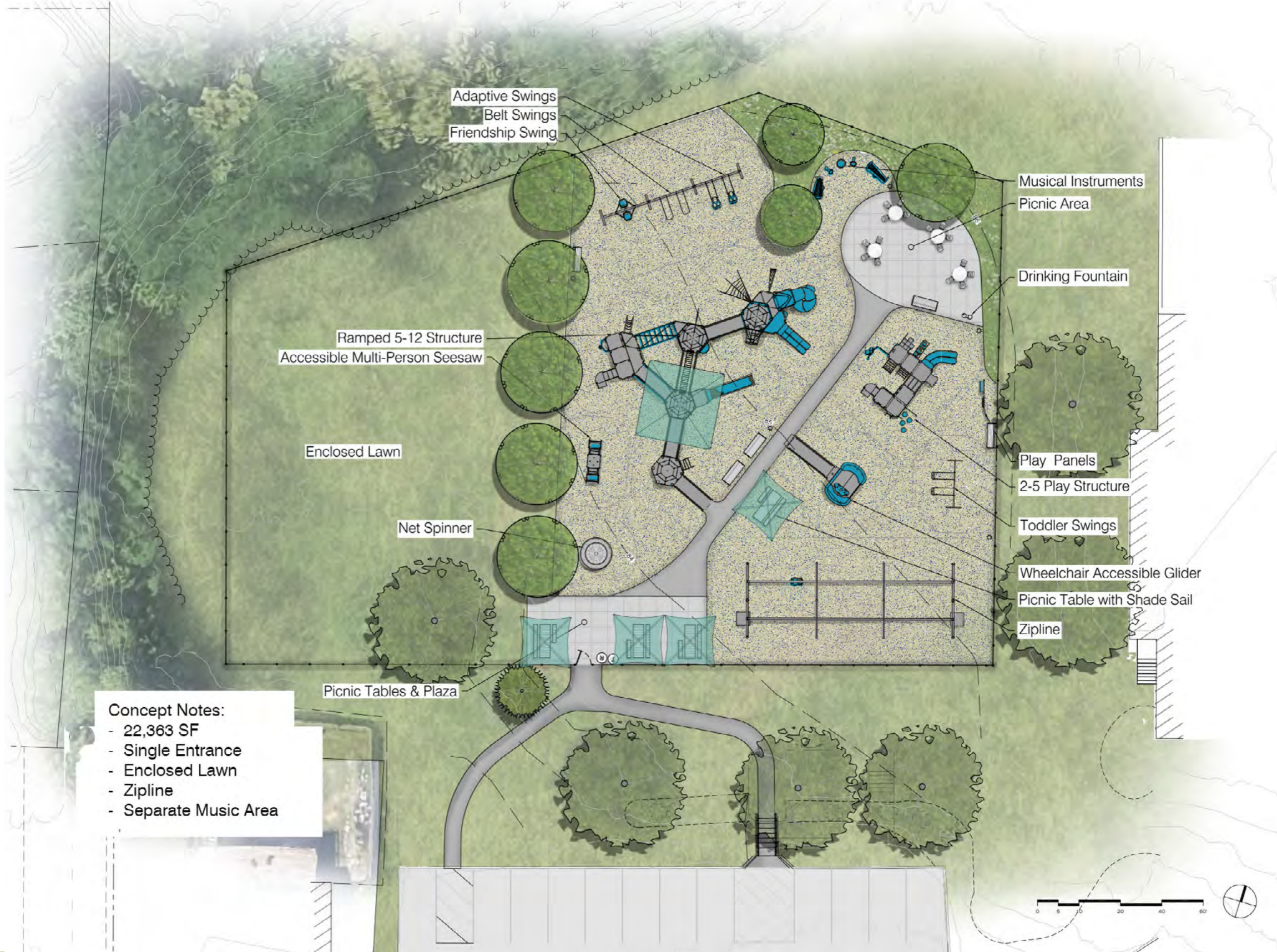


Police Car Rider



Roller Table

SCHEMATIC DESIGN C



PLAY EQUIPMENT

SCHEMATIC DESIGN C



Ages 5-12 Ramped Play Structure



Zipline with Inclusive Seat



Ages 2-5 Play Structure



Friendship Swing

PLAY EQUIPMENT

SCHEMATIC DESIGN C



Net Spinner



Roller Table



Sensory Play Panels



Accessible Glider

SCHEMATIC DESIGN D



PLAY EQUIPMENT

SCHEMATIC DESIGN D



Sensory Net Structure



Climbing Arches

Photo by CBA



Ages 2-5 Pretend Play Structures



Ages 5-12 Play Structure

PLAY EQUIPMENT

SCHEMATIC DESIGN D



Accessible Glider



Group Net Spinner

Photo by CBA



Individual Spinner



Accessible Sand Digger



Accessible Sand Table



Friendship Swing and Bowl Swing

SCHEMATIC DESIGN COMPARISON

Option A



Option B




Option C



Option D



An aerial photograph of a park area. The image shows a large green lawn with several trees, a paved parking lot with several cars, and a large, light-colored building with a flat roof. The text "QUESTIONS & DISCUSSION" is overlaid in the center of the image in a large, white, bold font.

QUESTIONS & DISCUSSION

- Which scheme appeals most to you and why?
- What did you like, or dislike, about a particular design option we've shown tonight?
- Are there any elements from other playgrounds you've liked that you want to see? (Or things you don't want!)
- Would you like to see a sand pit? Or adult fitness equipment?
- Is there anything about the current playground that we should be aware of?

THANK YOU FOR YOUR TIME!

Other questions, concerns, and ideas? Interested in attending future meetings or sending more feedback? Please contact:

Rory Lindstrom, Recreation Director
Woburn Recreation Department
Phone: (781)-897-5805
email: rlindstrom@cityofwoburn.com

If you are interested in learning more about this process or being more involved please e-mail Rory Lindstrom.