


# **PARK AT CLAPP SCHOOL SITE**

## **DESIGN MEETING 1**

### **TONIGHT'S AGENDA**

- **Introductions: City Staff and CBA Landscape Architects LLC**
  - **Project Schedule and Overview**
  - **Relevant Past CBA Projects**
  - **Existing Conditions Analysis**
  - **Programmatic Possibilities**
  - **Community Feedback**
- 
- A winter landscape with snow on the ground, a large tree in the foreground, and a body of water in the background under a cloudy sky.

# INTRODUCTIONS

## City of Woburn:

### **Recreation Department**

Project Manager: Rory Lindstrom, Recreation Director

## CBA Landscape Architects LLC:

Principal-In-Charge: D.J. Chagnon, ASLA CPSI

Staff Designers: Preston Holleman, Aaron Kraemer

- CBA has designed over 70 Parks & Playgrounds throughout greater Boston.
- Staff of 7 Landscape Architects and Designers
- Our firm's philosophy emphasizes the value of public input as a key factor of successful public space design.
- D.J. is a Certified Playground Safety Inspector & Registered Landscape Architect and a member of the Somerville Historic Preservation Commission.

PARK AT CLAPP SCHOOL SITE



**PROJECT SCHEDULE**

# PARK AT CLAPP SCHOOL SITE **Design Schedule**

- **Meeting 1 (April 28, 2016):** Present Site Analysis and Precedents, gather community input, and develop program wish list to guide Schematic Designs for future meetings.
- **Meeting 2 (Late May or Early June 2016):** Present Schematic Design Alternatives based on first meeting input. Community review and discussion, with the goal of identifying a final Definitive Design.
- **Meeting 3 (July 2016):** Present Definitive Design for park construction, including proposed features and site furnishings based on community discussion at Meeting 2. With community input, discuss project budget, next steps, and future schedule, and prioritize strategy to maximize budget.
- **Grants & Funding (2016-June 2017):** Pursue potential grants and other funding sources to aid construction, including but not necessarily limited to the \$400,000 state PARC grant, for which applications are due in early summer and awards made in late fall.
- **Construction Documents (Fall to Spring 2018):** Develop Definitive Design and suggested alternates into detailed Construction Documents suitable for bidding purposes.
- **Construction (2018-2019):** Construction schedule would be limited to July 2018-June 2019 by PARC program, assuming funding application is successful. (Building use is scheduled to end by

# RELEVANT PAST CBA PROJECTS



# CBA PROJECT Dr. Loesch Family Park - Boston, MA



- Connections through site, open play spaces & fields, active play spaces, entrance plaza

# CBA PROJECT Beverly Farms Library Park – Beverly Farms, MA



- Entry Gateway, Native Plantings, Passive Recreation & Walking Paths

# CBA PROJECT Kenney Park – Somerville, MA



Multipurpose Plaza & Water Feature, Gathering Spaces, Incorporation of Mature Trees



# CBA PROJECT John Ruiz Park – Chelsea, MA



- Division into clear zones, contemporary details, exercise equipment, separated water play area

# CBA PROJECT Almont Park – Mattapan, Boston



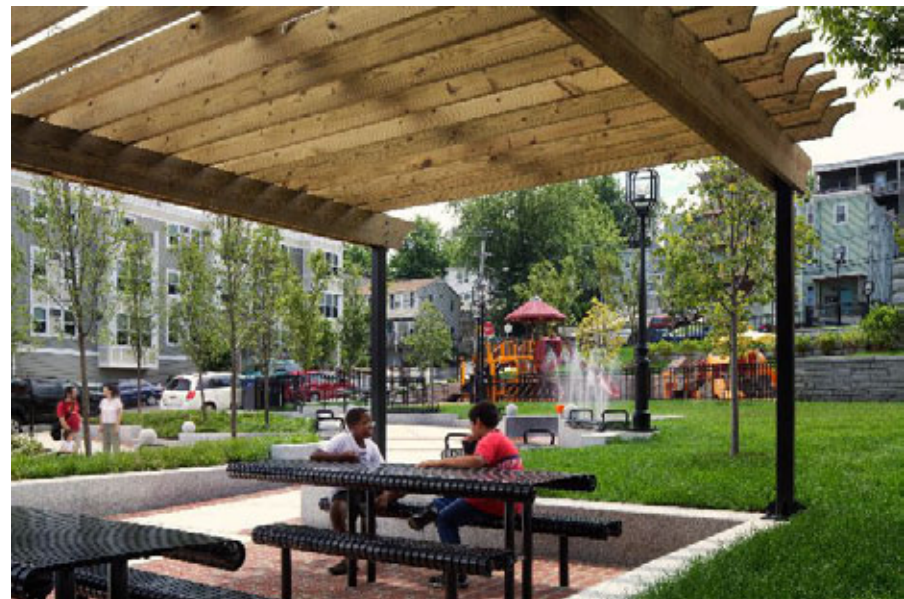
- Playground, Multi-Sports Fields, Construction Phased Over Time, Entry Plazas, Circulation

# CBA PROJECT Joyce Playground – Brighton, Boston



- Playground & active play spaces, creating accessible routes, use of land form to create space

# CBA PROJECT Box District Playground – Chelsea, MA



- Steeply sloping site including walls, picnic area, formal terraced plaza, & playground.

# CDA PROJECT Dickerman Playground – Craigie St, Somerville



- Connections through site, separation of spaces, artistic elements/details, water play area, bocce

# CBA PROJECT Washington Park – Chelsea, MA



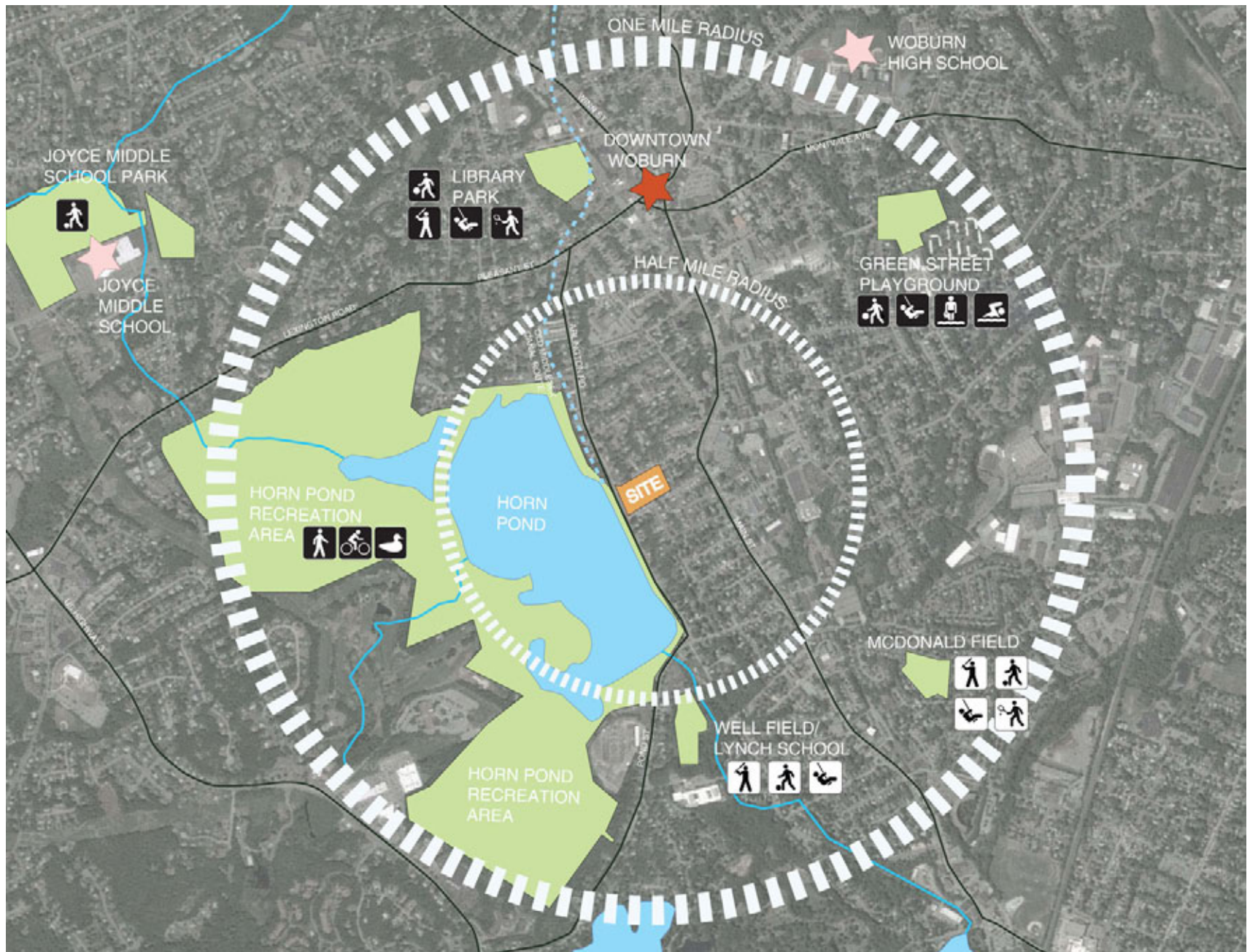
-Seat walls terrace the hillside, sculptural play elements, defined gathering space, strong path system

# PARK AT CLAPP SCHOOL SITE

## SITE ANALYSIS

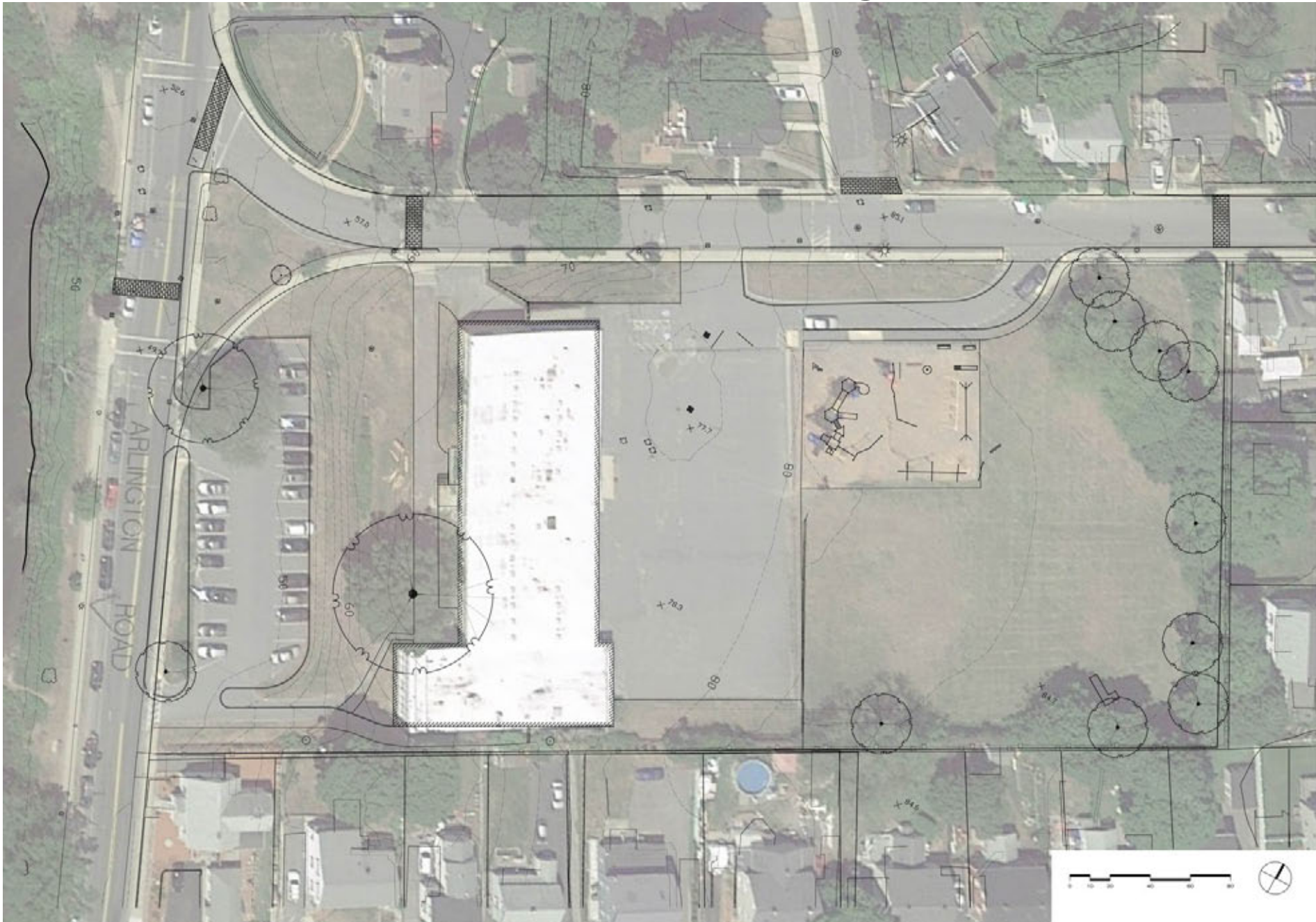
A photograph of a park area in winter. In the foreground, there is a paved asphalt area, possibly a parking lot or walkway, with some snow on the ground. A large, leafless tree stands on the right side of the frame. In the middle ground, there is a bench and a utility pole. The background features a large body of water, likely a lake or reservoir, with a snow-covered shoreline and a line of trees in the distance. The sky is a mix of blue and white, suggesting a clear day with some clouds. The overall scene is quiet and serene.

# PARK AT CLAPP SCHOOL SITE Site Context

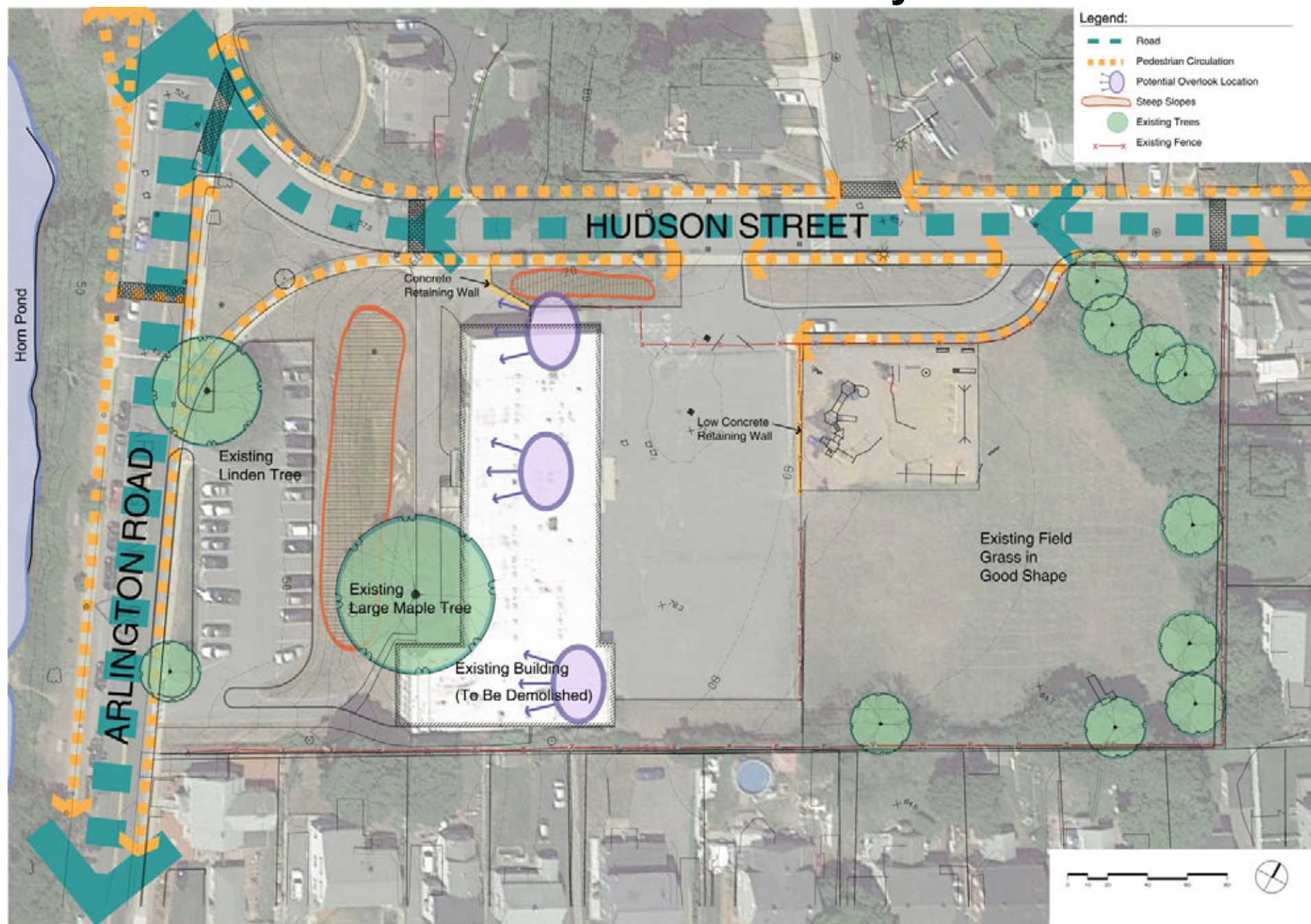




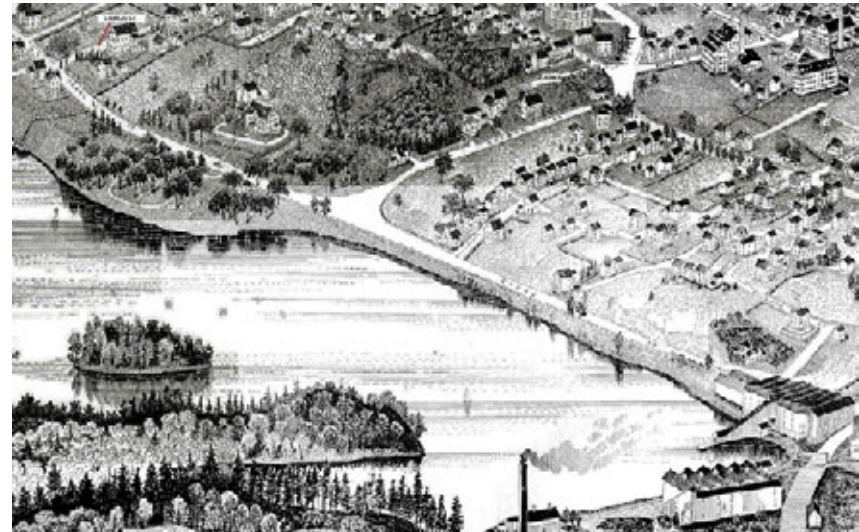
# PARK AT CLAPP SCHOOL SITE Existing Conditions



# PARK AT CLAPP SCHOOL SITE Site Analysis



# PARK AT CLAPP SCHOOL SITE Existing Conditions



# PARK AT CLAPP SCHOOL SITE Existing Conditions





**PROGRAMMATIC POSSIBILITIES**

# PROGRAM POSSIBILITIES **Gathering Areas**



# PROGRAM POSSIBILITIES **Childrens' Play**



# PROGRAM POSSIBILITIES **Fitness/Activity Areas**

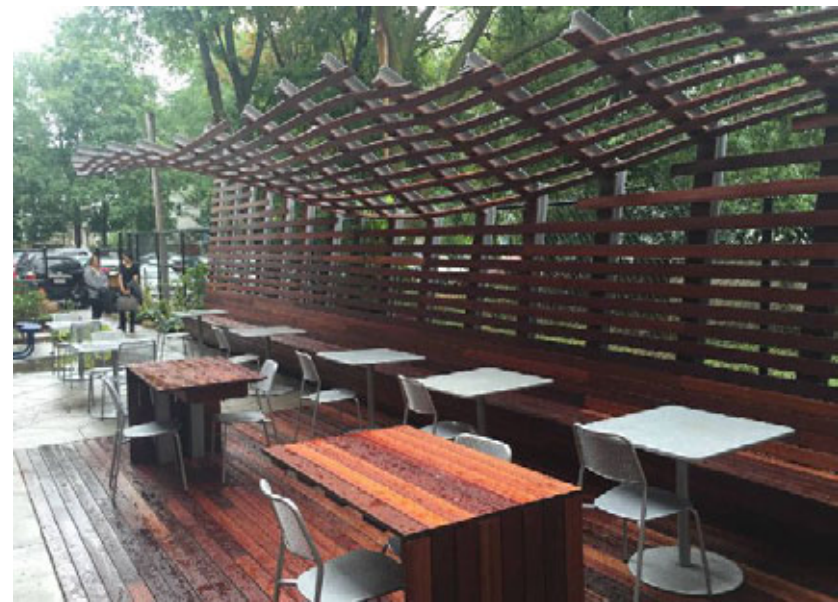
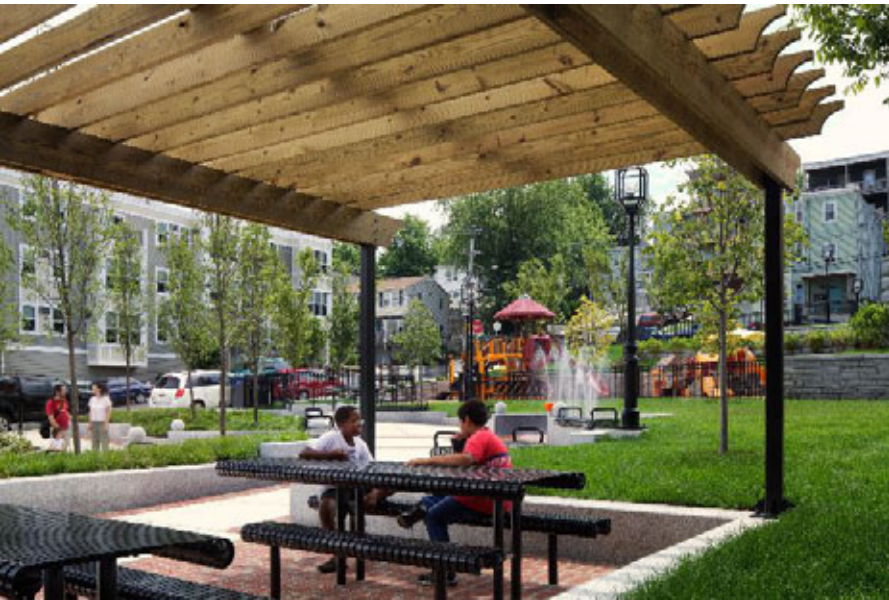




# PROGRAM POSSIBILITIES **Community Gardens, Natural Areas**



# PROGRAM POSSIBILITIES Park Structures



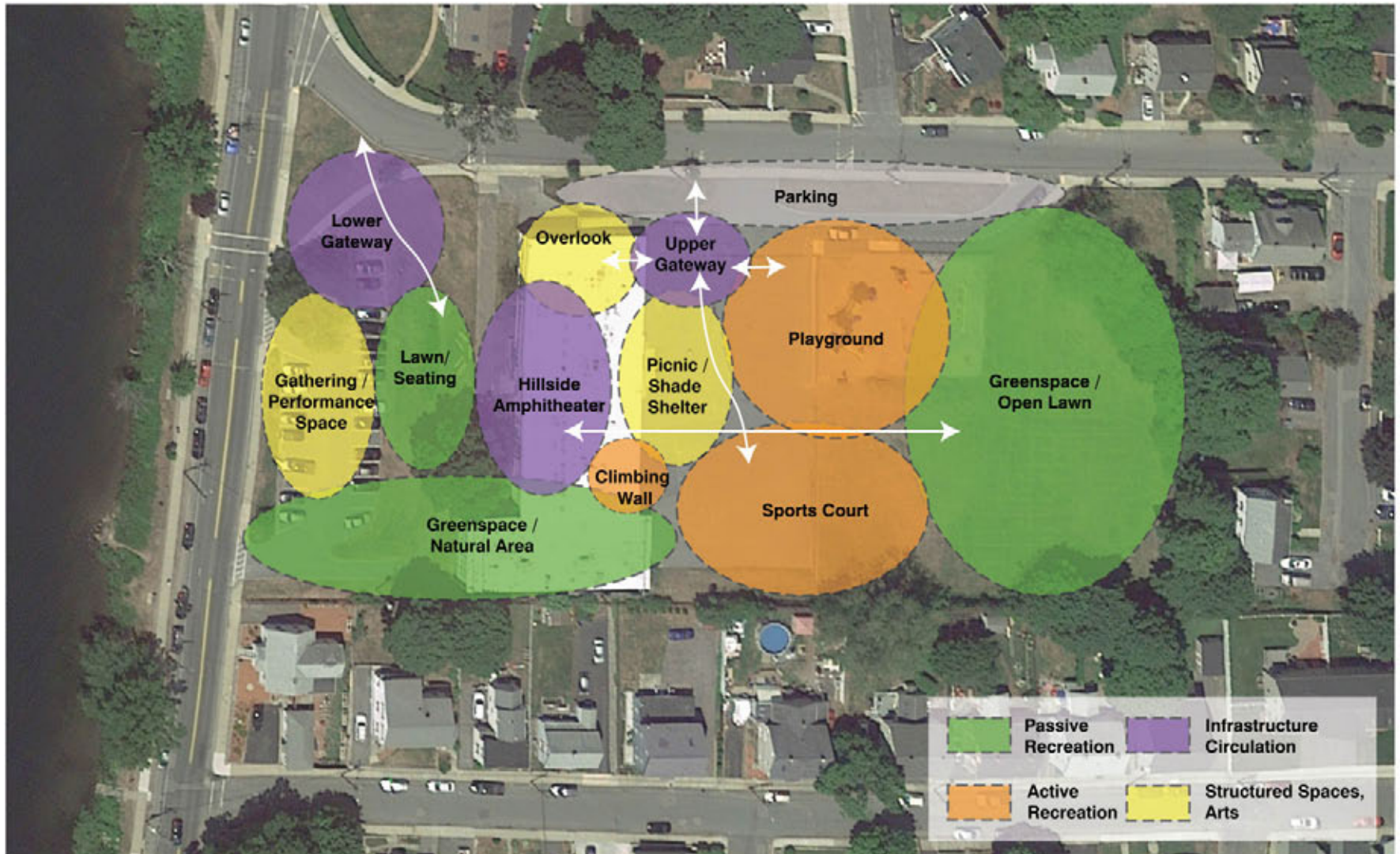
# PROGRAM POSSIBILITIES Amphitheaters & Slopes



# PROGRAM POSSIBILITIES Gateways & Entrances



# CLAPP SCHOOL SITE PARK Programming Option 1



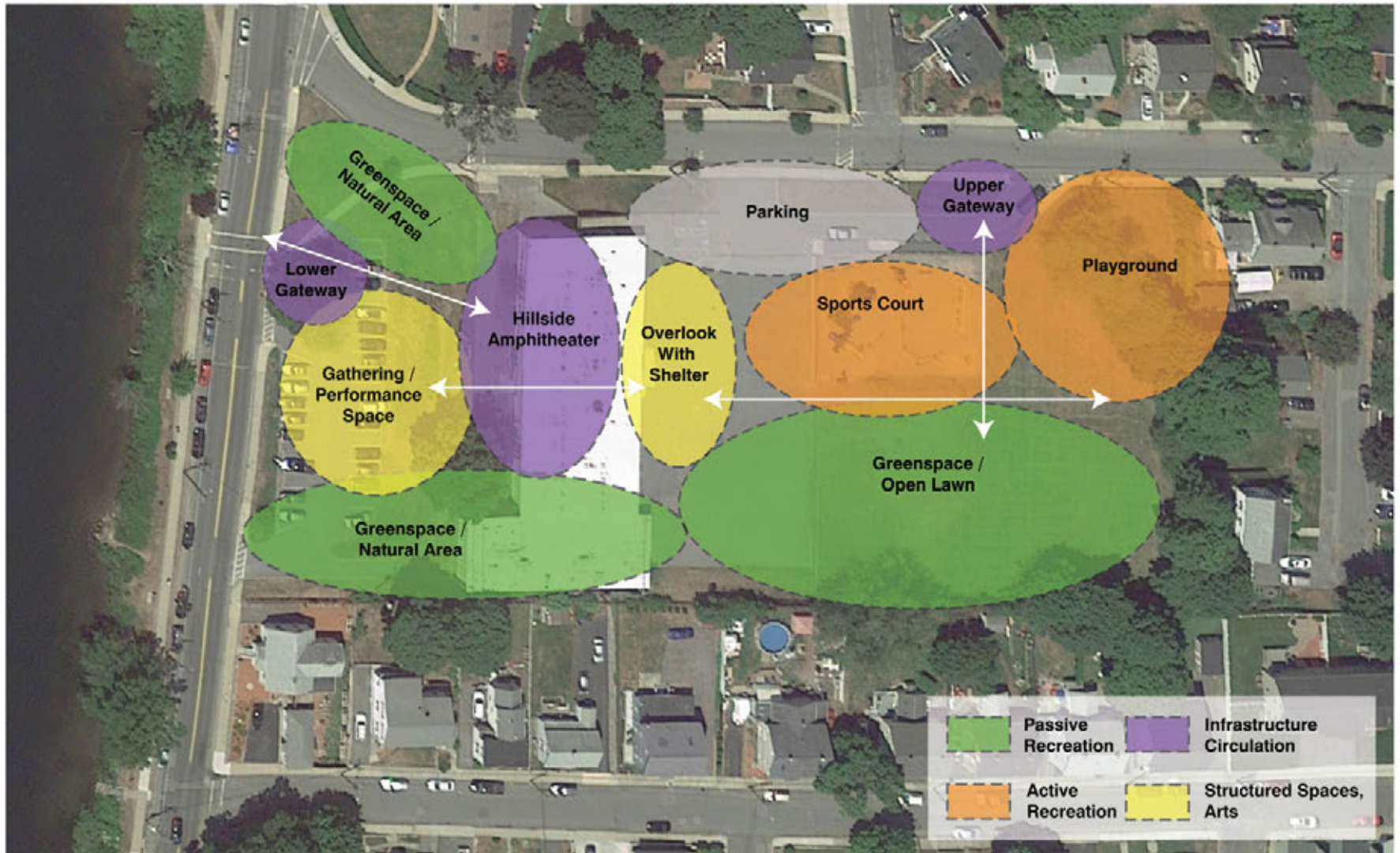
**Organizing Feature -**  
Central Active Core

**Hillside -** More Formal  
Amphitheater, Reuse  
Some of Structure

**Parking -** Enhance  
Upper Pulloff

**Additional Feature -**  
Climbing Wall

# CLAPP SCHOOL SITE PARK Programming Option 2



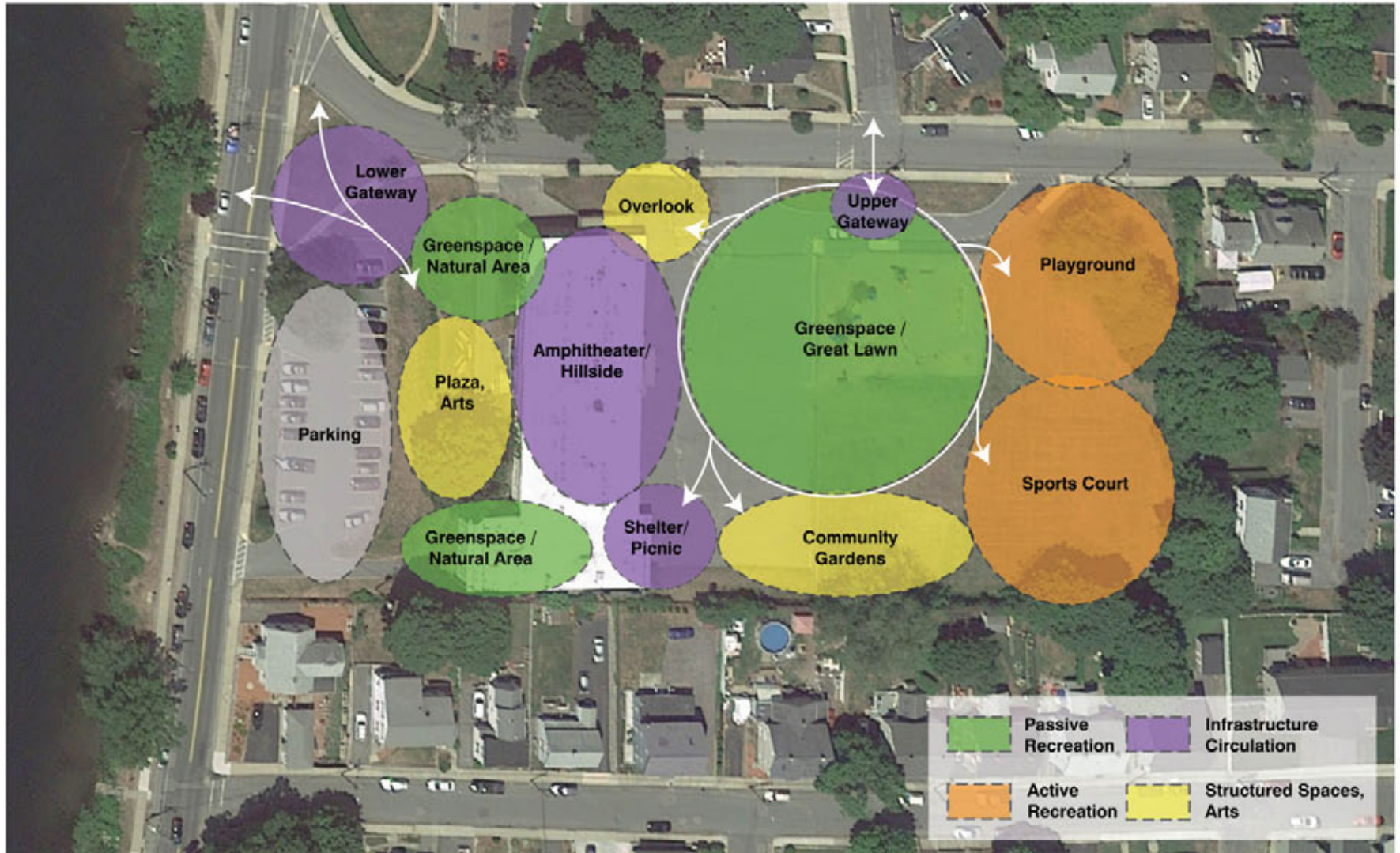
**Organizing Feature -**  
Activities at Entries &  
Major Axis

**Hillside - Structural**  
Top, Grand Stairs

**Parking - New**  
Lot at Top of Hill

**Additional Feature -**  
Enhanced Buffering

# CLAPP SCHOOL SITE PARK Programming Option 3



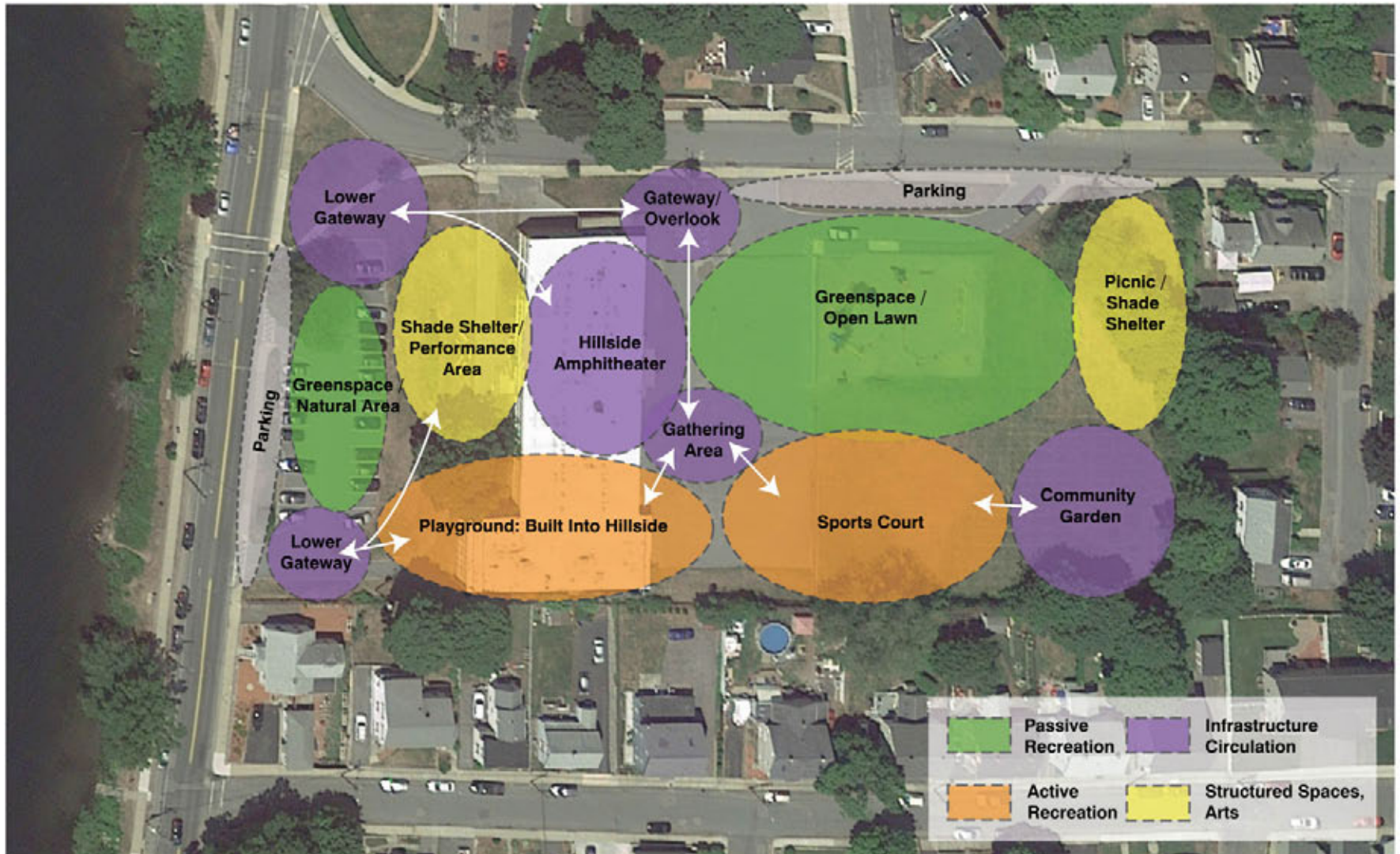
**Organizing Feature -**  
"Great Lawn" at  
Core

**Hillside - Activated**  
Through Uses (Play,  
Circulation, Seating)

**Parking - Existing**  
Lower Lot  
(Expand Potentially)

**Additional Feature -**  
Community Garden

# CLAPP SCHOOL SITE PARK Programming Option 4



**Organizing Feature -**  
Gateway as Overlook,  
Emphasis on Hillside

**Hillside - Activated**  
Through Uses (Play,  
Circulation, Seating)

**Parking - Make**  
Both Streets  
Two Sided Parking

**Additional Feature -**  
More Play Via Hillside



**THANK YOU for your time.**

**There will now be an opportunity for  
public questions and comments.**

## **PUBLIC COMMENTS MAY BE SENT BY:**

### **Mail**

**Rory Lindstrom  
Recreation Director  
Woburn City Hall  
10 Common Street  
Woburn, MA 01801**

### **Phone**

**781-897-5805**

### **Email**

**[rlindstrom@cityofwoburn.com](mailto:rlindstrom@cityofwoburn.com)**

# PARK AT CLAPP SCHOOL SITE Existing Conditions

